

Rabbit anti-CCHFV Gc pAb

Catalog #: 04-0012

Description:

Affinity purified rabbit polyclonal antibody reactive to CCHFV Gc protein.

Immunogen/ Target:

Peptide sequences specific to Crimean-Congo hemorrhagic fever virus (CCHFV) Gc.

Formulation & Storage: Supplied in PBS. Store at +4°C for 2-3 weeks, ≤-20°C for long term. Avoid multiple freeze thaws.

Notes & Usage Guidelines:

Clonality/Isotype: Polyclonal; N/A

Host: Rabbit

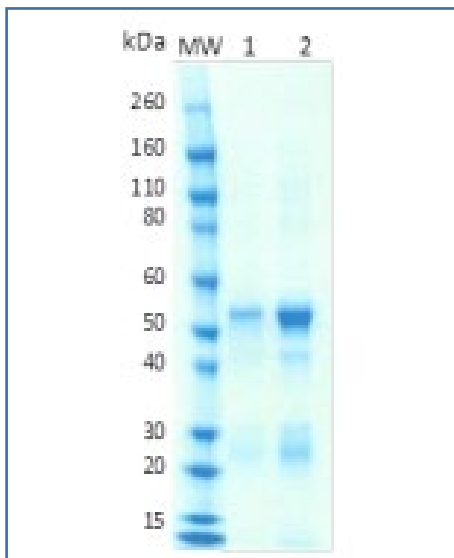
ELISA: Assay-dependent dilution

WB: NA

Applications

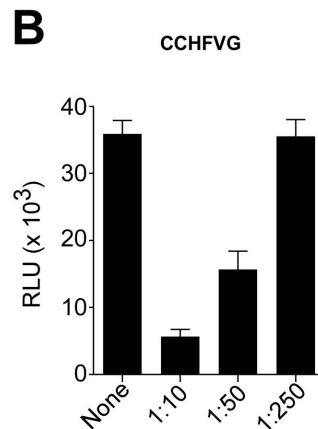
SDS Page Data:

SDS-PAGE and stain demonstrating 1 µg, and 5 µg (lanes 1 and 2, respectively) of affinity purified rabbit polyclonal antibody reactive to CCHFV Gc protein under reducing conditions.



Neutralization Data:

Anti-CCHFV Gc Antibody at 1:10, 1:50 and 1:250 dilutions were incubated with the VSV pseudo typed with CCHFV glycoprotein (VSV-CCHFVG) containing luciferase gene, for thirty minutes prior to transferring to SW13 cells. Infectivity was determined 24 hours later by assessing luciferase activity.



ELISA Data:

Peptide immunogens were coated to plates at a concentration of 4 µg/mL, 100 µL/well in PBS. Affinity purified rabbit polyclonal antibody reactive to CCHFV Gc was serially diluted two-fold starting at 1:1,000 dilution. Washed plates were detected with a goat anti-rabbit IgG HRP conjugate and TMB substrate. OD450 is reported below.

Capture ELISA Data:

Dilution	OD450		
	Peptide 1	Peptide 2	
NC	1:1,000	0.062	0.066
1	1:1,000	2.369	2.505
2	1:2,000	2.278	2.402
3	1:4,000	2.159	2.279
4	1:8,000	2.064	2.122
5	1:16,000	1.838	1.800
6	1:32,000	1.553	1.444
7	1:64,000	1.217	1.059
8	1:128,000	0.827	0.732
9	1:256,000	0.556	0.469
10	1:512,000	0.348	0.350
11	Blank	0.056	0.090
12	Blank	0.056	0.090
Titer		1:512,000	1:512,000
Starting dilution: 1:1,000 (Equivalent to 1 µg/ml)			
The titer is the highest dilution with S/B (Sample/Blank) >=2.1			
NC is negative control (Pre-immune serum)			

Certificate of analysis:

A hardcopy of datasheet is sent along with the products. Please refer to it for detailed information. For older lots, refer to the applicable certificate of analysis that may be requested at products@ibtbioservices.com.

Related Products:

IBT provides a wide array of antibodies, recombinant proteins, and other infectious disease reagents. Please see our website, www.ibtbioservices.com for more details.

Intended for research use only, not for human, therapeutic, or diagnostic applications.

The buyer cannot sell or otherwise transfer this product for Commercial Purposes without written approval of Integrated BioTherapeutics, LLC.

Copyright 2023. Integrated BioTherapeutics, LLC. All rights reserved.