

## Rabbit anti-CCHFV N pAb

Catalog #: 04-0011

### Description:

Affinity purified rabbit polyclonal antibody reactive to CCHFV N protein.

### Immunogen/ Target:

Peptide sequences specific to Crimean-Congo hemorrhagic fever virus (CCHFV) N.

**Formulation & Storage:** Supplied in PBS. Store at +4°C for 2-3 weeks, -20°C for long term. Avoid multiple freeze thaws.

### Notes & Usage Guidelines:

**Clonality/Isotype:** Polyclonal; N/A

**Host:** Rabbit

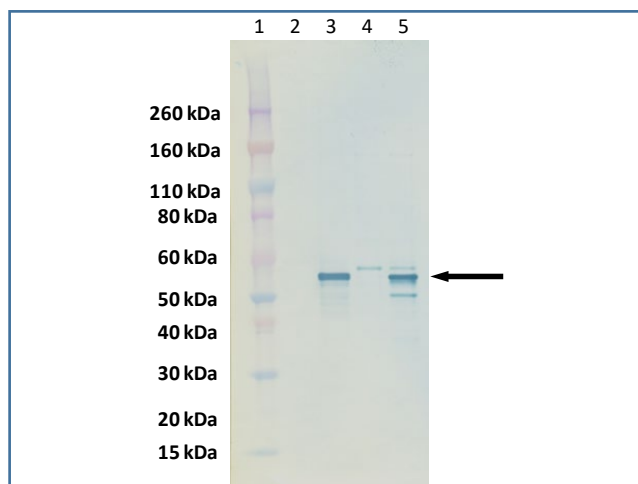
**ELISA:** Assay-dependent dilution

**WB:** Assay-dependent dilution

## Applications

### Western Blot Data:

Performed with CCHFV infected Vero cell lysates and HEK293T cell lysates transfected with recombinant CCHFV N protein (lanes 3 and 5, respectively). Mock infected Vero cell lysate (lane 2) and mock transfected HEK293 cell lysate (lane 4) were also used as negative controls. Blots were detected using anti-CCHFV N pAb at 5 ng/mL and visualized using an anti-rabbit HRP conjugate and chromogenic substrate (CCHFV N shown by arrow).



### ELISA Data:

Peptide immunogens were coated to plates at a concentration of 4 µg/mL, 100 µL/well in PBS. Affinity purified rabbit polyclonal antibody reactive to CCHFV N was serially diluted two-fold starting at 1:1,100 dilution. Washed plates were detected with a goat anti-rabbit IgG HRP conjugate and TMB substrate. OD<sub>450</sub> is reported below.

### Capture ELISA Data:

		OD450	
	Dilution	Peptide 1	Peptide 2
NC	1:1,000	0.08	0.067
1	1:1,000	2.797	2.697
2	1:2,000	2.769	2.554
3	1:4,000	2.624	2.55
4	1:8,000	2.612	2.052
5	1:16,000	2.433	1.545
6	1:32,000	2.149	1.069
7	1:64,000	1.769	0.648
8	1:128,000	1.231	0.443
9	1:256,000	0.716	0.279
10	1:512,000	0.435	0.179
11	Blank	0.059	0.063
12	Blank	0.059	0.063
Titer		1:512,000	1:512,000
Starting dilution: 1:1,000 (Equivalent to 1 µg/ml)			
The titer is the highest dilution with S/B (Sample/Blank) >=2.1			
NC is negative control (Pre-immune serum)			

### Certificate of analysis:

A hardcopy of datasheet is sent along with the products. Please refer to it for detailed information. For older lots, refer to the applicable certificate of analysis that may be requested at [products@ibtbioservices.com](mailto:products@ibtbioservices.com).

### Related Products:

IBT provides a wide array of antibodies, recombinant proteins, and other infectious disease reagents. Please see our website, [www.ibtbioservices.com](http://www.ibtbioservices.com) for more details.

**Intended for research use only, not for human, therapeutic, or diagnostic applications.**

*The buyer cannot sell or otherwise transfer this product for Commercial Purposes without written approval of Integrated BioTherapeutics, LLC.*

**Copyright 2023. Integrated BioTherapeutics, LLC. All rights reserved.**