

Rabbit anti-*S. aureus* LukS-PV pAb

Catalog #: 04-0009

Description:

Rabbit polyclonal antibody reactive to the LukS subunit of *Staphylococcal aureus* PVL expressed in *E. coli*.

Immunogen/ Target:

Recombinant Panton-Valentine Leukocidin (PVL) LukS subunit-His tag protein.

Formulation & Storage: Supplied in 1X DPBS + 0.01% sodium azide. Store at +4°C for 2-3 weeks, -20°C for long term.

Notes & Usage Guidelines:

Clonality/Isotype: Polyclonal; IgG

Host: Rabbit

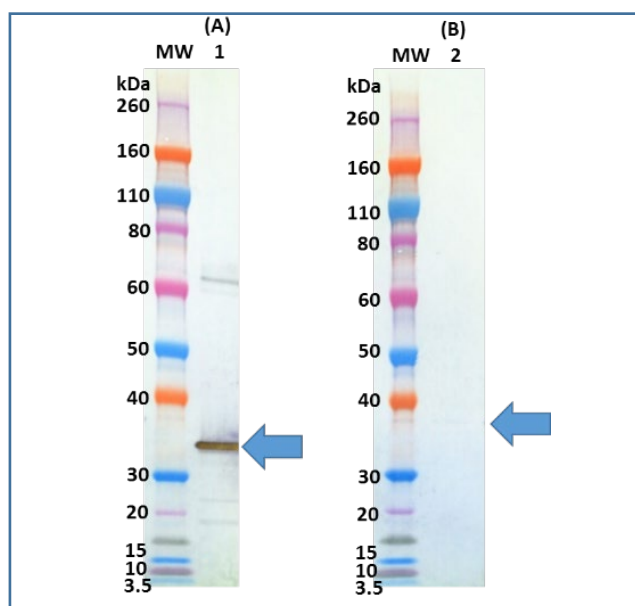
ELISA: Assay-dependent dilution

WB: Assay-dependent dilution

Applications

Western Blot Data:

Recombinant LukS PV (cat 0530-001) is detected as low as 10 ng using 0.5 µg/mL of rabbit anti-LukS PV polyclonal antibody and visualized using an anti-rabbit HRP conjugate and TMB Membrane substrate. Slight cross-reactivity against recombinant LukF PV (cat 0530-002) was observed.



Certificate of analysis:

A hardcopy of datasheet is sent along with the products. Please refer to it for detailed information. For older lots, refer to the applicable certificate of analysis that may be requested at products@ibtbioservices.com.

Related Products:

IBT provides a wide array of antibodies, recombinant proteins, and other infectious disease reagents. Please see our website, www.ibtbioservices.com for more details.