

Rabbit Anti-Staphylococcus aureus CP8-EPA polyclonal Antibody

Catalog #: 0320-PP-002

Size: 100 ug

Description:

Affinity purified rabbit polyclonal antibody reactive to Staphylococcus aureus capsular polysaccharide CP8-EPA conjugate vaccine.

Immunogen:

Staphylococcus aureus capsular polysaccharide CP8-EPA

Formulation & Storage: Aqueous; 8.5 mg protein/ml;

Short-Term Storage: 4°C for 2-3 weeks; Long-term Storage: -20°C

Notes & Usage Guidelines:

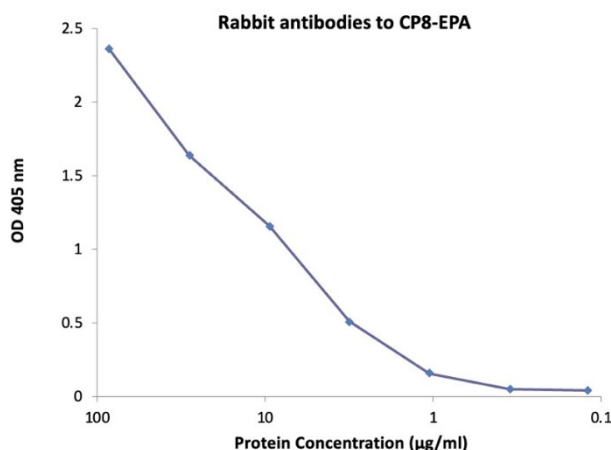
Clonality/Isotype: Polyclonal; N/A

Purity: Protein A purified IgG

ELISA: Assay-dependent dilution

Applications

ELISA Data: CP8 protein was diluted to X ng/well to coat plate. The rabbit Anti-Staphylococcus aureus CP8-EPA was serially diluted, 10-fold from 100 µg/mL and incubated on the coated plates. The washed plates were detected with anti-rabbit IgG-X conjugate and TMB substrate. The OD405 shows strong signals against target protein CP8.



Certificate of analysis:

A hardcopy of datasheet is sent along with the products. Please refer to it for detailed information. For older lots, refer to the applicable certificate of analysis that may be requested at services@ibtbioservices.com

Related Products:

IBT provides a wide array of anti-filovirus specific antibodies, recombinant proteins, and other infectious disease reagents. Please see our website, www.ibtbioservices.com for more details.

Intended for research use only, not for human, therapeutic, or diagnostic applications.
The buyer cannot sell or otherwise transfer this product for Commercial Purposes without written approval of Integrated BioTherapeutics, LLC.

Copyright 2024. Integrated BioTherapeutics, LLC. All rights reserved.