

Rabbit Anti-Western Equine Encephalitis (WEEV) E2 Glycoprotein pAb

Catalog #: 0319-001

Description:

Affinity-purified rabbit polyclonal antibody reactive to WEEV E2 glycoprotein.

Immunogen/ Target:

Peptide sequence specific to WEEV E2 glycoprotein.

Formulation & Storage: Supplied in PBS and 0.02% sodium azide. **Store at** +4°C for 2-3 weeks, -20°C for long term. Avoid multiple freeze thaws.

Notes & Usage Guidelines:

Clonality/Isotype: Polyclonal; N/A

Host: Rabbit

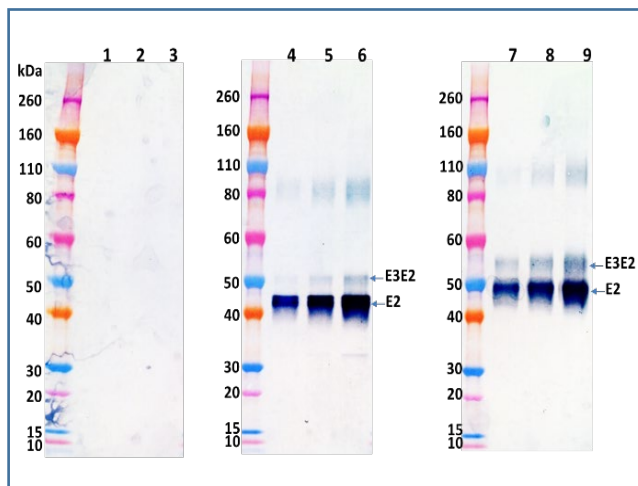
ELISA: Assay-dependent dilution

WB: Assay-dependent dilution

Applications

Western Blot Data:

Rabbit Anti-WEEV E2 polyclonal Ab at 250 ng/mL was able to detect WEEV E3E2/E2 glycoprotein, insect-derived (Catalog # 0561-001) loaded at 50, 100 and 200 ng/lane (lanes 4-6) and WEEV E3E2/E2 glycoprotein, mammalian-derived (Catalog # 0562-001) (lanes 7-9). No cross-reactivity against EEEV E3E2/E2 glycoprotein (Catalog # 0560-001) was observed (lanes 1-3). Western Blot was visualized using an anti-rabbit IgG-HRP conjugate and TMB Membrane substrate.



ELISA Data:

WEEV proteins were diluted to 4 µg/mL in PBS for plate coating. Anti-WEEV E2 pAb was serially diluted semi-log from 10 µg/mL and incubated on the coated plate. Washed plate was detected with anti-rabbit IgG-HRP conjugate and TMB substrate. OD650 is reported below.

Capture ELISA Data:

| Anti-WEEV pAb Concentration in µg/mL | OD 650 nm | |
|--|---|--|
| | against WEEV E3E2/E2 (insect-derived) | against WEEV E3E2/E2 (mammalian-derived) |
| 10.0000 | 4.000 | 4.000 |
| 3.1623 | 3.868 | 3.936 |
| 1.0000 | 3.546 | 3.556 |
| 0.3162 | 2.806 | 2.872 |
| 0.1000 | 1.497 | 1.522 |
| 0.0316 | 0.622 | 0.648 |
| 0.0100 | 0.256 | 0.267 |
| 0.0032 | 0.121 | 0.129 |
| 0.0010 | 0.072 | 0.089 |
| 0.0003 | 0.060 | 0.068 |
| 0.0001 | 0.059 | 0.068 |
| 0.0000 | 0.062 | 0.076 |

Certificate of analysis:

A hardcopy of datasheet is sent along with the products. Please refer to it for detailed information. For older lots, refer to the applicable certificate of analysis that may be requested at products@ibtbioservices.com.

Related Products:

IBT provides a wide array of antibodies, recombinant proteins, and other infectious disease reagents. Please see our website, www.ibtbioservices.com for more details.

Intended for research use only, not for human, therapeutic, or diagnostic applications.

The buyer cannot sell or otherwise transfer this product for Commercial Purposes without written approval of Integrated BioTherapeutics, LLC.

Copyright 2023. Integrated BioTherapeutics, LLC. All rights reserved.