

## Rabbit anti-EBOV VLP pAb

Catalog #: 0315-001

### Description:

Protein A purified rabbit polyclonal antibody reactive to EBOV VLP raised in New Zealand white rabbits.

### Immunogen/ Target:

Ebola (Zaire strain) Virus-like Particles containing glycoprotein (GP), nucleoprotein (NP), and matrix protein (VP40).

**Formulation & Storage:** Supplied in PBS. Store at +4°C for 2-3 weeks, -20°C for long term.

### Notes & Usage Guidelines:

**Clonality/Isotype:** Polyclonal; N/A

**Host:** Rabbit

**ELISA:** Assay-dependent dilution

**WB:** Assay-dependent dilution

## Applications

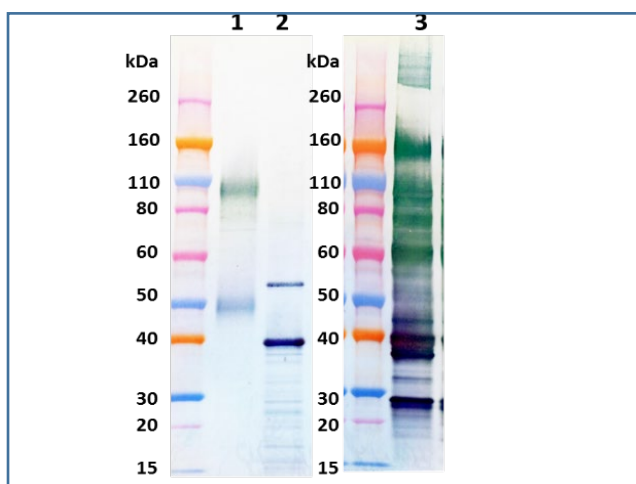
### Western Blot Data:

Western blot was detected with rabbit anti-EBOV VLP polyclonal antibody at 0.5 µg/mL and visualized using an anti-rabbit IgG-HRP conjugate and TMB membrane substrate.

Lane 1: EBOV GP minus the transmembrane domain (GPdTM).

Lane 2: EBOV matrix protein VP40.

Lane 3: Baculovirus-expressed EBOV VLP containing GP, NP and VP40.



**ELISA Data:** Not Tested

### Certificate of analysis:

A hardcopy of datasheet is sent along with the products. Please refer to it for detailed information. For older lots, refer to the applicable certificate of analysis that may be requested at [products@ibtbioservices.com](mailto:products@ibtbioservices.com).

### Related Products:

IBT provides a wide array of antibodies, recombinant proteins, and other infectious disease reagents. Please see our website, [www.ibtbioservices.com](http://www.ibtbioservices.com) for more details.

**Intended for research use only, not for human, therapeutic, or diagnostic applications.**

*The buyer cannot sell or otherwise transfer this product for Commercial Purposes without written approval of Integrated BioTherapeutics, LLC.*

**Copyright 2023. Integrated BioTherapeutics, LLC. All rights reserved.**