

Rabbit Anti-rClfA 40A (41- 559) His6 Polyclonal Antibody

Catalog #: 0311-004

Description:

Rabbit polyclonal antibody broadly reactive to rClfA 40A (41-559) His6.

Immunogen/ Target:

Staphylococcus aureus clumping factor A (rClfA) 40A (41-559) His6 peptide polyclonal (CIDKPVVPEQPDEPG).

Formulation & Storage: Supplied in PBS. Store at +4°C for 2-3 weeks, -80°C for long term.

Notes & Usage Guidelines:

Clonality/Isotype: Polyclonal; N/A

Host: Rabbit

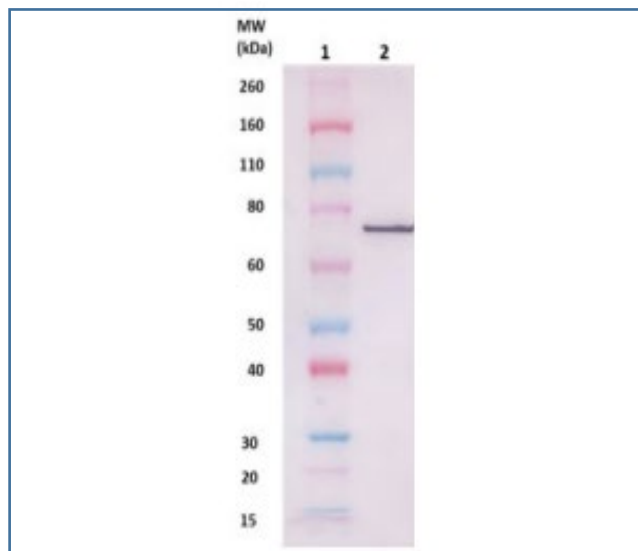
ELISA: Assay-dependent dilution

WB: Assay-dependent dilution

Applications

Western Blot Data:

100ng (lane 2) of rClfA 40A (41-559) His6 protein (cat # 0541-003) was loaded and detected with anti-rClfA 40A (41-559) His6 polyclonal antibody at 1 µg/mL and visualized using an anti-rabbit AP conjugate and AP substrate (lane 2). Lane 1 denotes Novex® Sharp prestained protein marker.



ELISA Data:

Not Tested

Certificate of analysis:

A hardcopy of datasheet is sent along with the products. Please refer to it for detailed information. For older lots, refer to the applicable certificate of analysis that may be requested at products@ibtbioservices.com.

Related Products:

IBT provides a wide array of antibodies, recombinant proteins, and other infectious disease reagents. Please see our website, www.ibtbioservices.com for more details.

Intended for research use only, not for human, therapeutic, or diagnostic applications.
The buyer cannot sell or otherwise transfer this product for Commercial Purposes without written approval of Integrated BioTherapeutics, LLC.

Copyright 2023. Integrated BioTherapeutics, LLC. All rights reserved.