

## Rabbit Anti-Csa1A Polyclonal Antibody

Catalog #: 0311-003

### Description:

Rabbit polyclonal antibody broadly reactive to Csa1A.

**Formulation & Storage:** Supplied in PBS. **Store at** +4°C for 2-3 weeks, -80°C for long term.

### Immunogen/ Target:

Conserved Staph Antigen 1A (Csa1A) peptide polyclonal (GYRDDQFDKNDKGTC).

### Notes & Usage Guidelines:

**Clonality/Isotype:** Polyclonal; N/A

**Host:** Rabbit

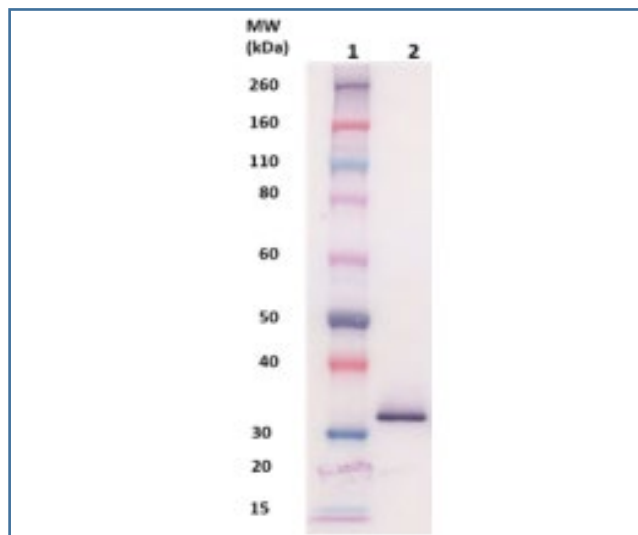
**ELISA:** Assay-dependent dilution

**WB:** Assay-dependent dilution

## Applications

### Western Blot Data:

100ng (lane 2) of Csa1A (39-40) protein (cat # 0541-002) was detected with anti-Csa1A polyclonal antibody at 1 µg/mL and visualized using an anti-rabbit AP conjugate and AP substrate (lane 2). Lane 1 denotes Novex® Sharp prestained protein marker. This antibody can be utilized for detection at a concentration of 1 µg/mL.



### ELISA Data:

Not Tested

### Certificate of analysis:

A hardcopy of datasheet is sent along with the products. Please refer to it for detailed information. For older lots, refer to the applicable certificate of analysis that may be requested at [products@ibtbioservices.com](mailto:products@ibtbioservices.com).

### Related Products:

IBT provides a wide array of antibodies, recombinant proteins, and other infectious disease reagents. Please see our website, [www.ibtbioservices.com](http://www.ibtbioservices.com) for more details.

**Intended for research use only, not for human, therapeutic, or diagnostic applications.**  
*The buyer cannot sell or otherwise transfer this product for Commercial Purposes without written approval of Integrated BioTherapeutics, LLC.*

Copyright 2023. Integrated BioTherapeutics, LLC. All rights reserved.