

Rabbit anti-IsdB Peptide Polyclonal Antibody

Catalog #: 0311-002

Description:

Rabbit polyclonal antibody broadly reactive to IsdB.

Formulation & Storage: Supplied in PBS. Store at +4°C for 2-3 weeks, -80°C for long term.

Immunogen/ Target:

Iron-regulated Surface Determinant Protein B (IsdB) peptide (CNDASSESGKDKTPA).

Notes & Usage Guidelines:

Clonality/Isotype: Polyclonal; N/A

Host: Rabbit

ELISA: Assay-dependent dilution

WB: Assay-dependent dilution

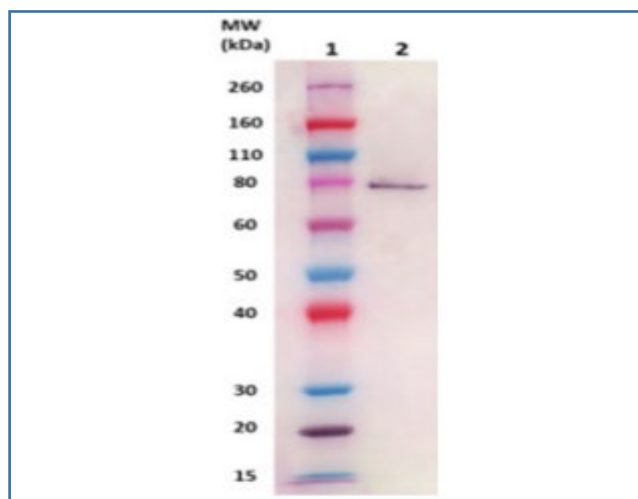
Applications

Western Blot Data:

100ng of IsdB protein (cat # 0541-001) was loaded and detected with anti-IsdB peptide polyclonal antibody at 1 µg/mL and visualized using an anti-rabbit AP conjugate and AP substrate (lane 2). Lanes 1 and 3 denotes Novex® Sharp prestained protein marker.

ELISA Data:

Not Tested



Certificate of analysis:

A hardcopy of datasheet is sent along with the products. Please refer to it for detailed information. For older lots, refer to the applicable certificate of analysis that may be requested at products@ibtbioservices.com.

Related Products:

IBT provides a wide array of antibodies, recombinant proteins, and other infectious disease reagents. Please see our website, www.ibtbioservices.com for more details.

Intended for research use only, not for human, therapeutic, or diagnostic applications.
The buyer cannot sell or otherwise transfer this product for Commercial Purposes without written approval of Integrated BioTherapeutics, LLC.

Copyright 2023. Integrated BioTherapeutics, LLC. All rights reserved.