

Rabbit anti-MARV VP40 Affinity Purified pAb

Catalog #: 0303-001

Description:

Affinity purified rabbit polyclonal antibody reactive to Marburg virus (MARV) VP40. The antibody detects VP40 in MARV virus-like particles (VLP) and recombinant MARV VP40 (rMVP40) in Western blot and ELISA.

Immunogen/ Target:

Peptide specific to the VP40 matrix protein of Lake Victoria Marburg virus Musoke strain.

Formulation & Storage: Supplied in PBS and 0.01% Sodium azide. **Store at** +4°C for 2-3 weeks, -20°C for long term.

Notes & Usage Guidelines:

Clonality/Isotype: Polyclonal; N/A

Host: Rabbit

ELISA: Assay-dependent dilution

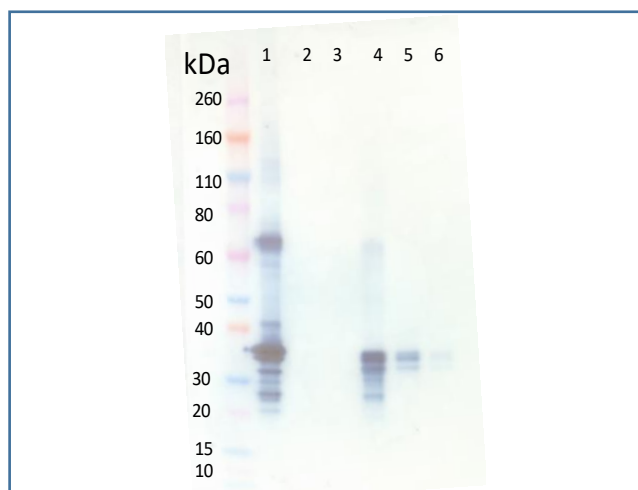
WB: Assay-dependent dilution

Applications

Western Blot Data:

Western blot was detected with Rabbit anti-MARV VP40 at 100 ng/mL and visualized using an anti-rabbit HRP conjugate and chromogenic substrate. VP40 is visualized in the MARV VLPs but not in the SUDV or EBOV VLPs. 500, 50 and 5 ng of partially purified recombinant MARV VP40 is detectable as described.

Lane 1: 1 µg MARV VLP, Lane 2: 1 µg SEBOV VLP, Lane 3: 1 µg ZEBOV VLP, Lane 4: rMVP40 500 ng, Lane 5: 50 ng, Lane 6: 5 ng.



ELISA Data:

VLPs were solubilized in a final concentration of 1% Triton X-100 to release VP40 and diluted to 10 µg/mL in PBS (0.01% Triton) for plate coating. Anti-VP40 antibody was serially diluted 3-fold from 10 µg/mL and incubated on the VLP coated plates. Washed plates were detected with anti-rabbit HRP conjugate and TMB substrate. OD650 is reported below.

ug/mL pAb	OD650
10.000	2.748
3.333	2.014
1.111	1.147
0.370	0.488
0.123	0.215
0.041	0.113
0.014	0.097
0.000	0.087

Certificate of analysis:

A hardcopy of datasheet is sent along with the products. Please refer to it for detailed information. For older lots, refer to the applicable certificate of analysis that may be requested at products@ibtbioservices.com.

Related Products:

IBT provides a wide array of antibodies, recombinant proteins, and other infectious disease reagents. Please see our website, www.ibtbioservices.com for more details.