

## PRODUCT NAME

Catalog #: 01-PP-0009

## Rabbit antiserum to CP5-CRM

### Description:

Serum from rabbits immunized with CP5-CRM conjugate vaccine

Formulation & Storage: undiluted antiserum; stored at -20C.

### Notes & Usage Guidelines:

Clonality: N/A

Purity: N/A

ELISA: Assay-dependent dilution (see below)

WB: Not done

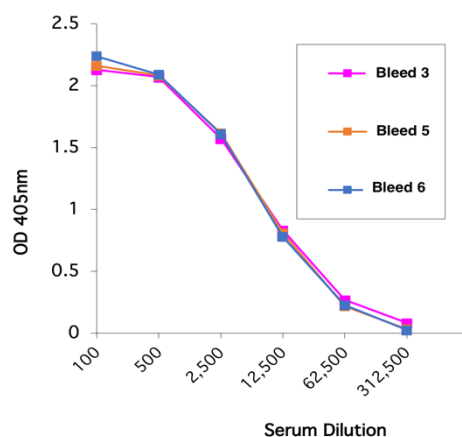
## Applications

### Western Blot Data:

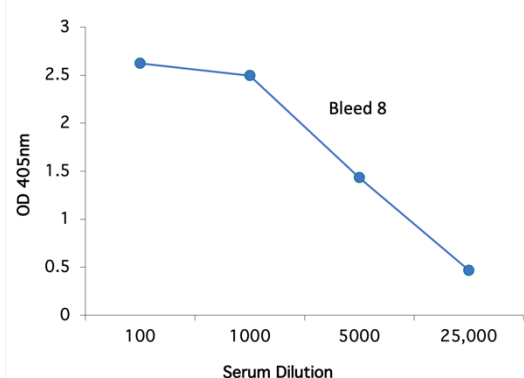
Not available

ELISA Data: Plate coated with purified CP5

CP5 ELISA - Rabbit antiserum to CP5-CRM



CP5 ELISA - Rabbit antiserum to CP5-CRM



### Certificate of analysis:

A hardcopy of datasheet is sent along with the products. Please refer to it for detailed information. For older lots, refer to the applicable certificate of analysis that may be requested at [services@ibtbioservices.com](mailto:services@ibtbioservices.com)

### Related Products:

IBT provides a wide array of anti-filovirus specific antibodies, recombinant proteins, and other infectious disease reagents. Please see our website, [www.ibtbioservices.com](http://www.ibtbioservices.com) for more details.

**Intended for research use only, not for human, therapeutic, or diagnostic applications.**  
*The buyer cannot sell or otherwise transfer this product for Commercial Purposes without written approval of Integrated BioTherapeutics, LLC.*

**Copyright 2023. Integrated BioTherapeutics, LLC. All rights reserved.**