

Anti-Japanese Encephalitis Virus NS1 Antibody, JN2.

Catalog #: 0229-PP-002

Description:

JEV non-structural protein 1-reactive mouse monoclonal antibody. This monoclonal antibody reacts with the non-structural protein 1 (NS1) of JEV with some cross-reactivity with DENV2 NS1.

Immunogen/ Target:

JEV infected supernatant/lysate

Formulation & Storage: Store at +4°C for stable

Notes & Usage Guidelines:

Clonality/Isotype: monoclonal / IgG2b, Kappa.

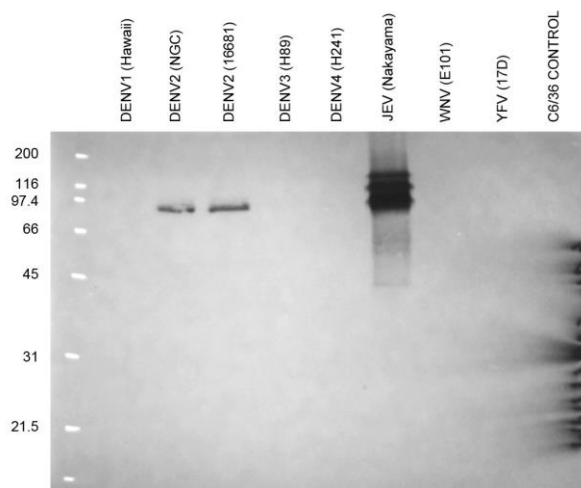
Host: Mouse

ELISA:

WB:

Applications

This monoclonal antibody has been primarily used for the detection of dimeric JEV NS1 protein band in western blot immunoassay.



Lysates from infected C6/36 cells treated with SDS-PAGE non-reducing sample buffer and loaded onto gel as unheated samples to detect reactivity to NS1 dimer (expected size 86kD)

Certificate of analysis:

A hardcopy of datasheet is sent along with the products. Please refer to it for detailed information. For older lots, refer to the applicable certificate of analysis that may be requested at services@ibtbioservices.com

Related Products:

IBT provides a wide array of antibodies, recombinant proteins, and other infectious disease reagents. Please see our website, www.ibtbioservices.com for more details.

Intended for research use only, not for human, therapeutic, or diagnostic applications.

The buyer cannot sell or otherwise transfer this product for Commercial Purposes without written approval of Integrated BioTherapeutics, LLC.

Copyright 2023. Integrated BioTherapeutics, LLC. All rights reserved.