

Anti-Dengue Virus Serotype 1 Antibody, DE16.

Catalog #: 0223-PP-016

Description:

DENV serotype 1 E glycoprotein specific mouse monoclonal antibody. This monoclonal antibody reacts with a conformational epitope present on DENV1 E.

Immunogen/ Target:

Recombinant DENV E protein.

Formulation & Storage: Store at +4°C for stable

Notes & Usage Guidelines:

Clonality/Isotype: monoclonal / IgG1, Kappa.

Host: Mouse

ELISA:

WB:

Applications

This monoclonal antibody has been primarily used for the detection of DENV1 antigen in an antigen capture ELISA. Detects DENV1 by western blot (non-reducing unheated conditions) and FRNT.

Assay steps :

Anti-mouse Ig coated well

Blocked with BSA

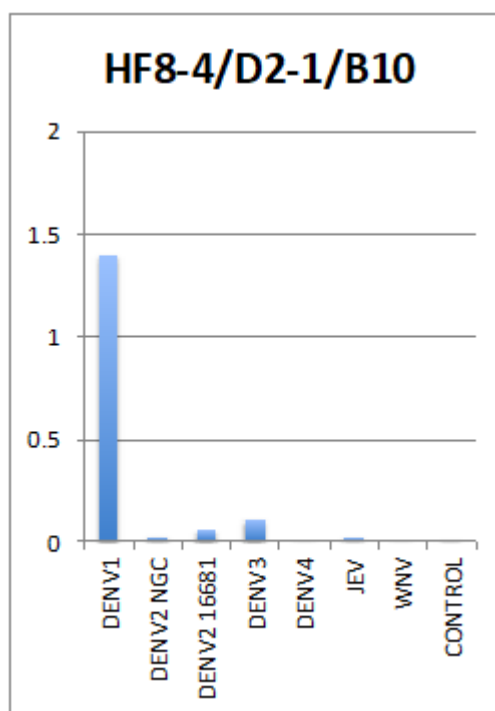
Monoclonal antibody

Antigen sample

Polyclonal anti-flavivirus antibody

Conjugate

Substrate



Certificate of analysis:

A hardcopy of datasheet is sent along with the products. Please refer to it for detailed information. For older lots, refer to the applicable certificate of analysis that may be requested at services@ibtbioservices.com

Related Products:

IBT provides a wide array of antibodies, recombinant proteins, and other infectious disease reagents. Please see our website, www.ibtbioservices.com for more details.

Intended for research use only, not for human, therapeutic, or diagnostic applications.

The buyer cannot sell or otherwise transfer this product for Commercial Purposes without written approval of Integrated BioTherapeutics, LLC.

Copyright 2023. Integrated BioTherapeutics, LLC. All rights reserved.