

Conserved Staph antigen 1A (Csa1A) 39-40

Catalog #: 0541-002

Description:

Staphylococcus aureus cell surface associated lipoprotein Conserved Staph Antigen, 1A (Csa1A) 39-40 is expressed harvested from *E. coli* as a recombinant protein. Csa1A construct starts at the 39-40 amino acid sequence. The theoretical molecular weight of the protein is approximately 28.0 kDa.

Formulation & Storage: Supplied in PBS and 0.02% proclin. **Store at** +4°C for 2-3 weeks, -80°C for long term.

Notes & Usage Guidelines:

ELISA: Assay-dependent dilution

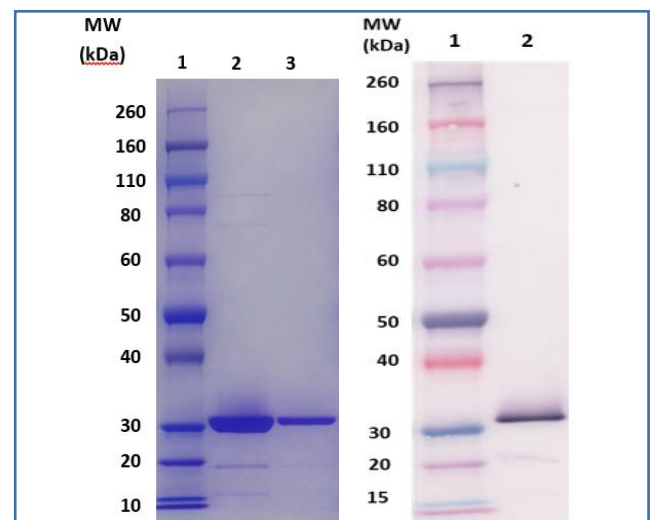
WB: Assay-dependent dilution

Applications

SDS-PAGE and Western Blot Data:

(Left) SDS-PAGE and stain demonstrating 1 μ g and 5 μ g (Lanes 2 and 3 respectively) of anti-Csa1A polyclonal antibody under denaturing and reducing conditions. Lane 1 denotes Novex® Sharp prestained protein marker.

(Right) Western Blot: 100ng (Lane 2) of Csa1A (39-40) protein was loaded and detected with anti-Csa1A peptide polyclonal antibody (Catalog # 0311-003) at 1 μ g/mL and visualized using an anti-rabbit AP conjugate and AP substrate (Lane 2). Lane 1 denotes Novex® Sharp prestained protein marker.



Certificate of analysis:

A hardcopy of datasheet is sent along with the products. Please refer to it for detailed information. For older lots, refer to the applicable certificate of analysis that may be requested at services@ibtbioservices.com

Related Products:

IBT provides a wide array of anti-filovirus specific antibodies, recombinant proteins, and other infectious disease reagents. Please see our website, www.ibtbioservices.com for more details.

Intended for research use only, not for human, therapeutic, or diagnostic applications.

The buyer cannot sell or otherwise transfer this product for Commercial Purposes without written approval of Integrated BioTherapeutics, LLC.

Copyright 2023. Integrated BioTherapeutics, LLC. All rights reserved.