

Recombinant Staphylococcal Enterotoxin Q (rSEQ)

Catalog #: 0533-001

Description:

Recombinant SEQ expressed in *E. coli* and purified to greater than 90% using column chromatography.

Formulation & Storage: Supplied in PBS containing sodium chloride and 5% glycerol. **Store at** -20°C for 2-3 weeks, -80°C for long term.

Notes & Usage Guidelines:

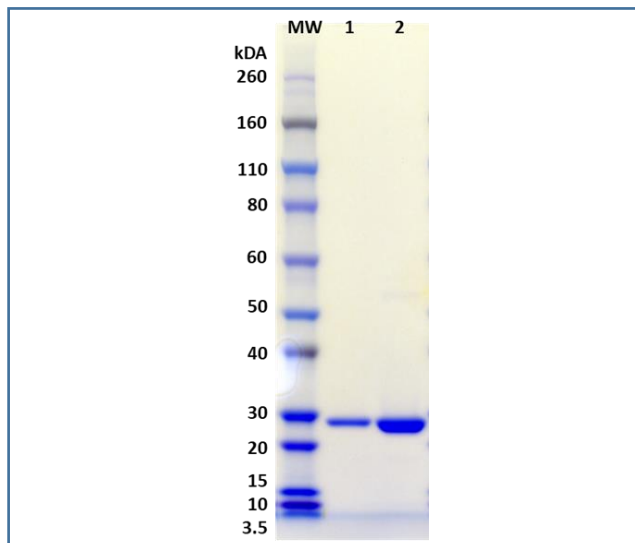
ELISA: Assay-dependent dilution

WB: Assay-dependent dilution

Applications

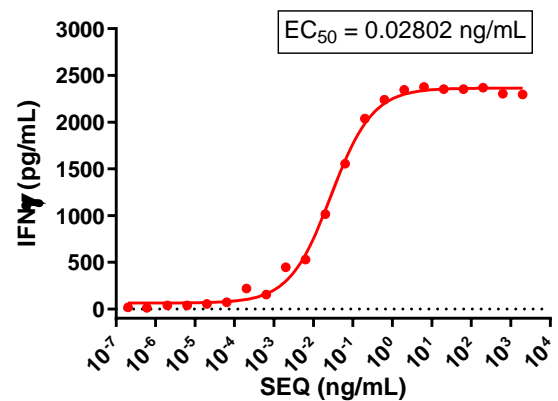
SDS-PAGE Data:

SDS-PAGE of rSEQ at 1 µg and 5 µg (Lanes 1 and 2 respectively) when tested under reducing condition.



PBMC Stimulation Assay Data:

Interferon γ was detected from human PBMCs by ELISA following 48-hour incubation of PBMCs with varying amounts of rSEQ. Data shown in the graph below represents the average Interferon γ value from three PBMC donors.



Certificate of analysis:

A hardcopy of datasheet is sent along with the products. Please refer to it for detailed information. For older lots, refer to the applicable certificate of analysis that may be requested at services@ibtbioservices.com

Related Products:

IBT provides a wide array of anti-filovirus specific antibodies, recombinant proteins, and other infectious disease reagents. Please see our website, www.ibtbioservices.com for more details.

Intended for research use only, not for human, therapeutic, or diagnostic applications.
 The buyer cannot sell or otherwise transfer this product for Commercial Purposes without written approval of Integrated BioTherapeutics, LLC.

Copyright 2023. Integrated BioTherapeutics, LLC. All rights reserved.