

## Rabbit anti-*S. aureus* LukS-PV pAb

Catalog #: 04-0009

Lot #: 1704001

### Description:

Rabbit polyclonal antibody reactive to the LukS subunit of *Staphylococcal aureus* PVL expressed in *E. coli*.

### Immunogen/ Target:

Recombinant Panton-Valentine Leukocidin (PVL) LukS subunit-His tag protein.

**Formulation & Storage:** Supplied in 1X DPBS + 0.01% sodium azide. **Store at** +4°C for 2-3 weeks, -20°C for long term.

### Notes & Usage Guidelines:

**Clonality/Isotype:** Polyclonal; IgG

**Host:** Rabbit

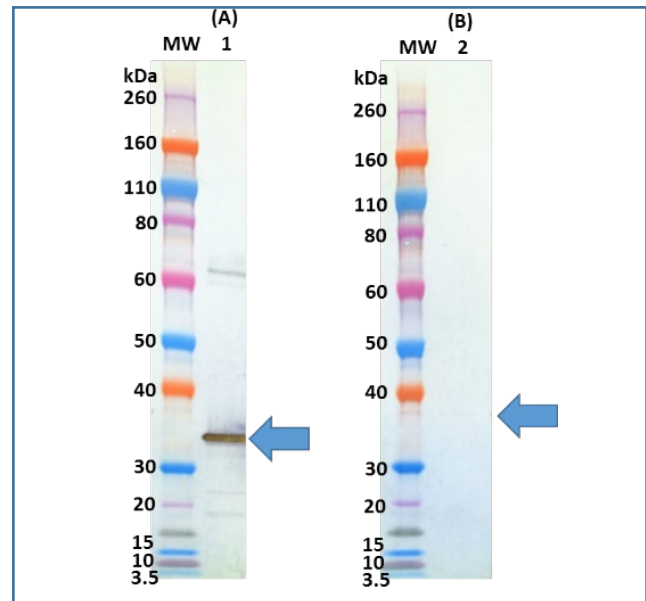
**ELISA:** Not recommended

**WB:** Assay-dependent dilution

## Applications

### Western Blot Data:

Recombinant LukS PV (cat 0530-001) is detected as low as 10 ng using 0.5 µg/mL of rabbit anti-LukS PV polyclonal antibody and visualized using an anti-rabbit HRP conjugate and TMB Membrane substrate. Slight cross-reactivity against recombinant LukF PV (cat 0530-002) was observed.



### Certificate of Testing for:

Lot#: **1704001**

Volume: 500 µg

Concentration: 1.334 mg/mL

### Related Products:

IBT provides a wide array of antibodies, recombinant proteins, and other infectious disease reagents. Please see our website, [www.ibtbioservices.com](http://www.ibtbioservices.com) for more details.

Intended for research use only, not for human, therapeutic, or diagnostic applications.

The buyer cannot sell or otherwise transfer this product for Commercial Purposes without written approval of Integrated BioTherapeutics, LLC.

Copyright 2023. Integrated BioTherapeutics, LLC. All rights reserved.