

Rabbit anti-Rift Valley Fever (RVFV) MP12 pAb

Catalog #: 04-0001

Description:

Rabbit polyclonal for RVFV MP12.

Formulation & Storage: Supplied in PBS. Store at -80°C.

Immunogen/ Target:

Sucrose purified virus from infected supernatant; Rift Valley Fever Virus (RVFV) MP-12 strain.

Notes & Usage Guidelines:

Clonality/Isotype: Polyclonal; N/A

Host: Rabbit

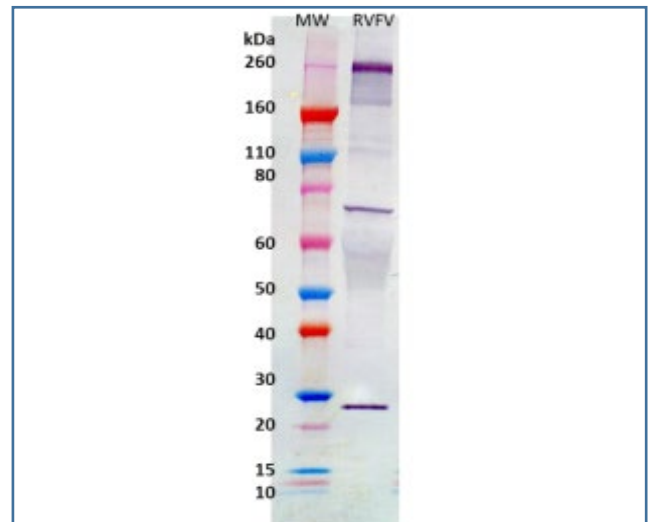
ELISA: N/A

WB: Assay-dependent dilution

Applications

Western Blot Data:

RVFV MP-12 strain was detected under denaturing and reducing conditions with anti RVFV antibody at 0.5 µg/mL and visualized using anti-rabbit IgG-HRP conjugate and TMB membrane substrate. Anti-RVFV polyclonal antibody was diluted to 0.5 µg/mL and incubated with 2% FBS for 2 hours prior to blotting.



Certificate of analysis:

A hardcopy of datasheet is sent along with the products. Please refer to it for detailed information. For older lots, refer to the applicable certificate of analysis that may be requested at products@ibtbioservices.com.

Related Products:

IBT provides a wide array of antibodies, recombinant proteins, and other infectious disease reagents. Please see our website, www.ibtbioservices.com for more details.

Intended for research use only, not for human, therapeutic, or diagnostic applications.

The buyer cannot sell or otherwise transfer this product for Commercial Purposes without written approval of Integrated BioTherapeutics, LLC.

Copyright 2023. Integrated BioTherapeutics, LLC. All rights reserved.