

Rabbit anti-SARS-CoV-2 RBD pAb

Catalog #: 0373-001

Lot #: 2007005

Description:

Affinity-purified rabbit polyclonal antibody reactive to SARS-CoV-2 RBD in Western blot and ELISA.

Immunogen/ Target:

Peptide sequence specific to the Receptor Binding Domain (RBD) of SARS-CoV-2 Spike protein.

Formulation & Storage: Supplied in PBS. Store at -20°C for 2-3 weeks, -80°C for long term.

Notes & Usage Guidelines:

Clonality/Isotype: Polyclonal; NA

Host: Rabbit

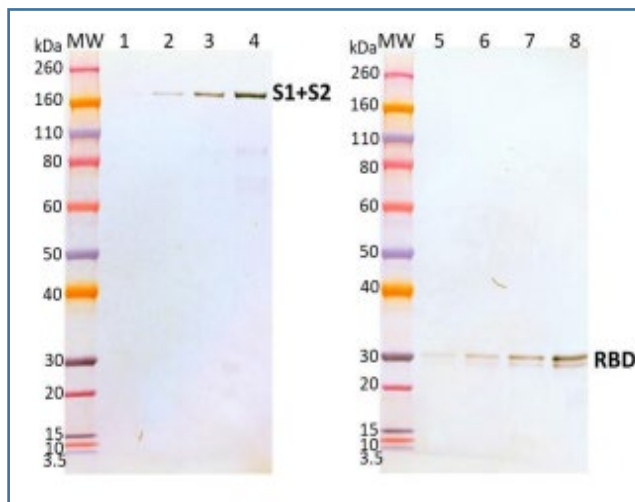
ELISA: Assay-dependent dilution

WB: Assay-dependent dilution

Applications

Western Blot Data:

SARS-CoV-2 Spike protein at 25, 50, 100 and 200 ng (lanes 1-4) and RBD protein at 25, 50, 100 and 200 ng (lanes 5-8) tested under reduced condition, were detected using rabbit pAb at 500 ng/mL and visualized using an anti-rabbit IgGHRP conjugate and TMB membrane substrate.



ELISA Data:

Spike and RBD proteins were diluted to 1.5 µg/mL in PBS for plate coating. Rabbit pAb was serially diluted semi-log and incubated on the coated plates. Washed plates were detected with anti-rabbit IgG-HRP conjugate and TMB substrate. OD650 is reported below.

Capture ELISA Data:

Rabbit Pab (µg/mL)	Coating Antigen	
	Spike protein	RBD
27.600	2.873	3.515
8.728	2.179	3.167
2.760	1.384	2.615
0.873	0.821	1.712
0.276	0.373	0.796
0.087	0.195	0.319
0.028	0.092	0.154
0.009	0.063	0.077
0.003	0.054	0.055
0.001	0.054	0.048
0	0.051	0.044
OD650		

Certificate of Testing for:

Lot#: **2007005**

Volume: 100 µg

Concentration: 2.485 mg/mL

Related Products:

IBT provides a wide array of antibodies, recombinant proteins, and other infectious disease reagents. Please see our website, www.ibtbioservices.com for more details.

Intended for research use only, not for human, therapeutic, or diagnostic applications.

The buyer cannot sell or otherwise transfer this product for Commercial Purposes without written approval of Integrated BioTherapeutics, LLC.

Copyright 2023. Integrated BioTherapeutics, LLC. All rights reserved.