

## Rabbit anti-SARS-CoV-2 S1-C pAb

Catalog #: 0371-001

Lot #: 2007003

### Description:

Affinity-purified rabbit polyclonal antibody reactive to S1 subunit in Western blot and ELISA.

### Immunogen/ Target:

Peptide sequence specific to SARS-CoV-2 Spike protein, near the C-terminus of S1 subunit.

**Formulation & Storage:** Supplied in PBS. Store at -20°C for 2-3 weeks, -80°C for long term.

### Notes & Usage Guidelines:

**Clonality/Isotype:** Polyclonal; NA

**Host:** Rabbit

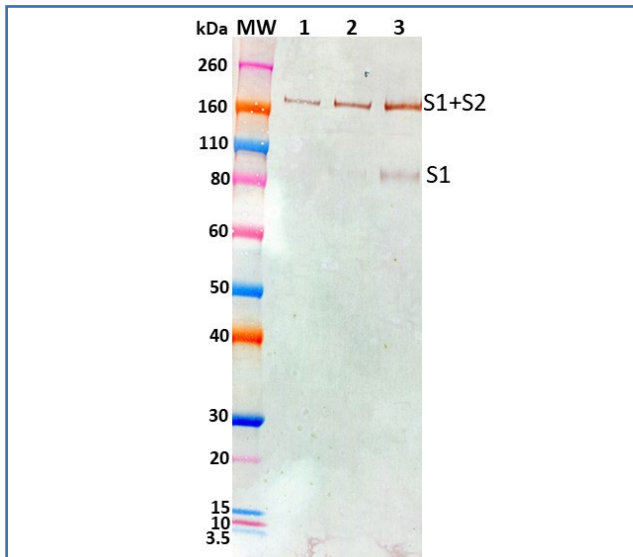
**ELISA:** Assay-dependent dilution

**WB:** Assay-dependent dilution

## Applications

### Western Blot Data:

Spike protein at 25, 50 and 100 ng (lanes 1-3) under reduced condition, was detected using rabbit pAb at 100 ng/mL and visualized using an anti-rabbit IgG-HRP conjugate and TMB membrane substrate.



### ELISA Data:

Spike protein was diluted to 1.5 µg/mL in PBS for plate coating. Rabbit pAb was serially diluted semi-log and incubated on the coated plates. Washed plates were detected with anti-rabbit IgG-HRP conjugate and TMB substrate. OD<sub>650</sub> is reported below.

### Capture ELISA Data:

Rabbit pAb (µg/mL)	OD <sub>650</sub>
18.500	3.913
5.850	3.831
1.850	3.712
0.585	3.260
0.185	2.463
0.059	1.376
0.019	0.582
0.006	0.218
0.002	0.102
0.001	0.066
0.000	0.056

### Certificate of Testing for:

Lot#: **2007003**

Volume: 100 µg

Concentration: 0.409 mg/mL

### Related Products:

IBT provides a wide array of antibodies, recombinant proteins, and other infectious disease reagents. Please see our website, [www.ibtbioservices.com](http://www.ibtbioservices.com) for more details.

Intended for research use only, not for human, therapeutic, or diagnostic applications.

The buyer cannot sell or otherwise transfer this product for Commercial Purposes without written approval of Integrated BioTherapeutics, LLC.

Copyright 2023. Integrated BioTherapeutics, LLC. All rights reserved.