

## Rabbit anti-EBOV soluble GP (sGP) pAb

Catalog #: 0365-001

Lot #: 1709005

### Description:

Affinity purified rabbit polyclonal antibody reactive to EBOV sGP. The antibody detects EBOV sGP in Western blot and ELISA.

### Immunogen/ Target:

Peptide sequence to Ebola Virus (EBOV) soluble glycoprotein (sGP) (Catalog # 0565-001).

**Formulation & Storage:** Supplied in PBS and 0.02% sodium azide. **Store at** +4°C for 2-3 weeks, -20°C for long term.

### Notes & Usage Guidelines:

**Clonality/Isotype:** Polyclonal; N/A

**Host:** Rabbit

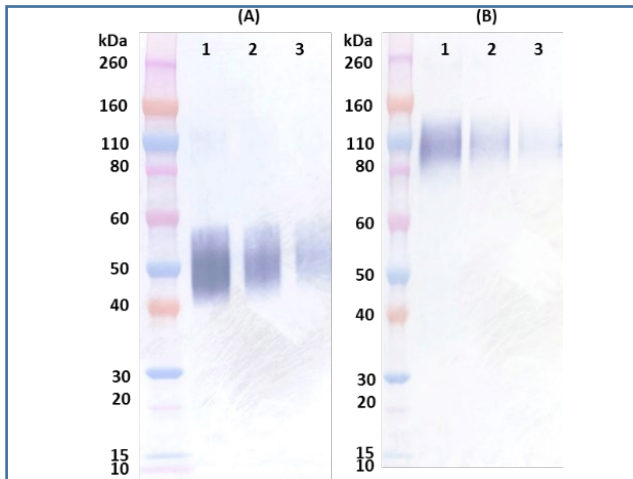
**ELISA:** Assay-dependent dilution

**WB:** Assay-dependent dilution

## Applications

### Western Blot Data:

Western blots were detected under (A) reduced and denatured conditions and (B) non-reduced and denatured conditions with rabbit anti-EBOV sGP antibody at 0.1 µg/mL and visualized using an anti-rabbit IgG-HRP conjugate and TMB Membrane substrate. EBOV sGP is visualized at 200 ng, 100 ng, and 50 ng (lane 1, 2, and 3 respectively). The rabbit anti-EBOV sGP antibody is able to detect both the reduced monomer of EBOV sGP as well as the non-reduced homodimer of EBOV sGP.



### ELISA Data:

EBOV sGP and EBOV GPΔTM (Catalog # 0501-001) proteins were diluted to 400 ng/well in PBS to coat plates. The rabbit anti-EBOV sGP antibody was serially diluted, semi-log from 1 µg/mL and incubated on the coated plates. The washed plates were detected with anti-rabbit IgG-HRP conjugate and TMB substrate. The OD<sub>650</sub> below shows strong signals against target EBOV sGP. Background signals against EBOV GPΔTM were nearly undetectable.

### Capture ELISA Data:

Rabbit anti-EBOV soluble GP pAb (µg/mL)	EBOV	
	soluble GP	GPΔTM
1.000	3.771	0.118
0.316	3.020	0.086
0.100	1.866	0.074
0.032	0.863	0.070
0.010	0.357	0.076
0.003	0.163	0.072
0.001	0.121	0.083
0.000	0.081	0.082
0.000	0.071	0.097
0.000	0.077	0.077
	<b>OD 650</b>	

### Certificate of Testing for:

Lot#: **1709005**

Volume: 100 µg

Concentration: 0.384 mg/mL

### Related Products:

IBT provides a wide array of antibodies, recombinant proteins, and other infectious disease reagents. Please see our website, [www.ibtbioservices.com](http://www.ibtbioservices.com) for more details.

Intended for research use only, not for human, therapeutic, or diagnostic applications.

The buyer cannot sell or otherwise transfer this product for Commercial Purposes without written approval of Integrated BioTherapeutics, LLC.

Copyright 2023. Integrated BioTherapeutics, LLC. All rights reserved.