

Rabbit anti-LukB pAb

Catalog #: 0317-001

Lot #: 1801002

Description:

Affinity purified rabbit polyclonal antibody reactive to *Staphylococcal* LukB. The antibody detects recombinant LukB protein and LukB expressed in Newman strain.

Immunogen/ Target:

Peptide sequence specific to *Staphylococcus aureus* Leukocidin B (LukB) protein sequence.

Formulation & Storage: Supplied in PBS and 0.02% sodium azide. **Store at** $\leq -20^{\circ}\text{C}$ for long term. Avoid multiple freeze thaws.

Notes & Usage Guidelines:

Clonality/Isotype: Polyclonal; N/A

Host: Rabbit

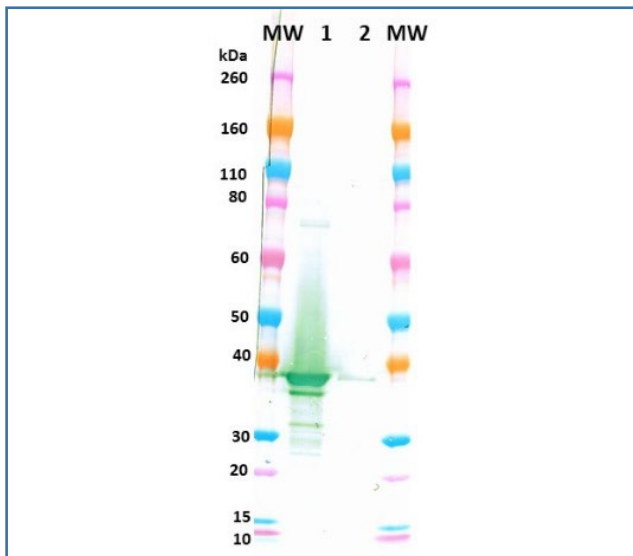
ELISA: Assay-dependent dilution

WB: Assay-dependent dilution

Applications

Western Blot Data:

Rabbit anti-LukB polyclonal antibody at 0.1 $\mu\text{g}/\text{mL}$ was able to detect LukB in 100 ng of heat-denatured and reduced recombinant *S. aureus* LukA-LukB heterodimer (lane 1) and did not detect recombinant *S. aureus* LukF-PV (lane 2). Protein bands were visualized using an anti-rabbit IgG-HRP, followed by TMB Membrane Substrate.



ELISA Data:

Recombinant *S. aureus* LukA-LukB heterodimer (Catalog # 0510-001) and recombinant LukF-PV protein (Catalog # 0540-002) were coated onto ELISA plates at 100 ng/well. Rabbit anti-LukB polyclonal antibody was serially diluted semi-log from 10 $\mu\text{g}/\text{mL}$ and incubated on the coated plates. Washed plates were detected with anti-rabbit IgG-HRP and TMB Microwell Substrate. OD650 is reported below. The anti-LukB polyclonal antibody strongly reacted to LukB in the recombinant *S. aureus* LukA-LukB heterodimer. Cross-reactivity was not observed against recombinant *S. aureus* LukF-PV at the highest concentrations of antibody tested.

Capture ELISA Data:

Anti-LukB antibody ($\mu\text{g}/\text{mL}$)	OD 650	
	against 100 ng/well of recombinant LukA-LukB heterodimer	against 100 ng/well of recombinant LukF-PV protein
10.0000	3.821	0.128
3.1623	3.719	0.037
1.0000	3.630	0.081
0.3162	3.517	0.065
0.1000	3.231	0.089
0.0316	2.360	0.044
0.0100	1.412	0.093
0.0032	0.598	0.099
0.0010	0.253	0.075
0.0003	0.132	0.078
0.0001	0.091	0.084
0.0000	0.082	0.120

Certificate of Testing for:

Lot#: **1801002**

Volume: 100 μg

Concentration: 0.590 mg/mL

Related Products:

IBT provides a wide array of antibodies, recombinant proteins, and other infectious disease reagents. Please see our website, www.ibtbioservices.com for more details.

Intended for research use only, not for human, therapeutic, or diagnostic applications.

The buyer cannot sell or otherwise transfer this product for Commercial Purposes without written approval of Integrated BioTherapeutics, LLC.

Copyright 2023. Integrated BioTherapeutics, LLC. All rights reserved.