

Rabbit anti-LukA pAb

Catalog #: 0316-001

Lot #: 1801001

Description:

Affinity purified rabbit polyclonal antibody reactive to *Staphylococcal* LukA. The antibody detects recombinant LukA protein.

Immunogen/ Target:

Peptide sequence specific to *Staphylococcus aureus* Leukocidin A (LukA) protein sequence.

Formulation & Storage: Supplied in PBS and 0.02% sodium azide. **Store at** $\leq -20^{\circ}\text{C}$ for long term. Avoid multiple freeze thaws.

Notes & Usage Guidelines:

Clonality/Isotype: Polyclonal; N/A

Host: Rabbit

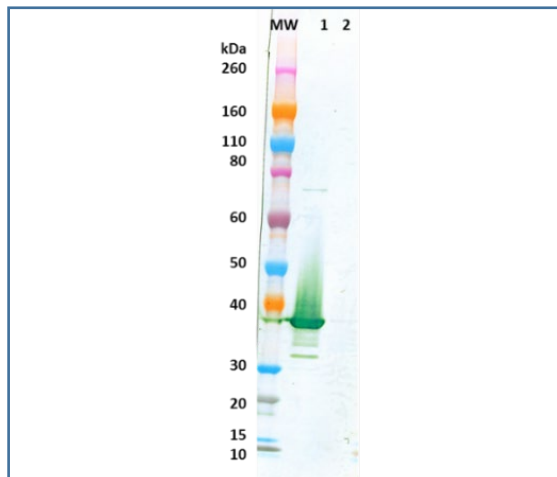
ELISA: Assay-dependent dilution

WB: Assay-dependent dilution

Applications

Western Blot Data:

Rabbit anti-LukA polyclonal antibody at 0.1 $\mu\text{g}/\text{mL}$ was able to detect LukA in 100 ng of heat-denatured and reduced recombinant *S. aureus* LukA-LukB heterodimer (lane 1) and did not detect recombinant *S. aureus* LukS-PV (lane 2). Protein bands were visualized using an anti-rabbit IgG-HRP, followed by TMB Membrane Substrate.



ELISA Data:

Recombinant *S. aureus* LukA-LukB heterodimer (cat# 0510-001) and recombinant LukS-PV protein (cat# 0540-001) were coated onto ELISA plates at 100 ng/well. Rabbit anti-LukA polyclonal antibody was serially diluted semi-log from 10 $\mu\text{g}/\text{mL}$ and incubated on the coated plates. Washed plates were detected with anti-rabbit IgG-HRP and TMB Microwell Substrate. OD650 is reported below. The anti-LukA polyclonal antibody strongly reacted to LukA in the recombinant *S. aureus* LukA-LukB heterodimer. Cross-reactivity was not observed against recombinant *S. aureus* LukS-PV at the highest concentrations of antibody tested.

Capture ELISA Data:

Anti-LukA antibody ($\mu\text{g}/\text{mL}$)	OD 650	
	against 100 ng/well of recombinant LukA-LukB heterodimer	against 100 ng/well of recombinant LukS-PV protein
10.0000	3.812	0.074
3.1623	3.692	0.064
1.0000	3.601	0.065
0.3162	3.320	0.057
0.1000	2.590	0.060
0.0316	1.478	0.069
0.0100	0.657	0.068
0.0032	0.288	0.066
0.0010	0.145	0.061
0.0003	0.089	0.064
0.0001	0.073	0.066
0.0000	0.075	0.079

Certificate of Testing for:

Lot#: **1801001**

Volume: 100 μg

Concentration: 0.660 mg/mL

Related Products:

IBT provides a wide array of antibodies, recombinant proteins, and other infectious disease reagents. Please see our website, www.ibtbioservices.com for more details.

Intended for research use only, not for human, therapeutic, or diagnostic applications.

The buyer cannot sell or otherwise transfer this product for Commercial Purposes without written approval of Integrated BioTherapeutics, LLC.

Copyright 2023. Integrated BioTherapeutics, LLC. All rights reserved.