

## Rabbit anti-Staphylococcal Gamma Hemolysin C pAb

Catalog #: 0314-002

Lot #: 1212002

### Description:

Rabbit polyclonal antibody reactive to the *Staphylococcus aureus* Hlg C with His tag.

### Immunogen/ Target:

Purified, His-tagged *Staphylococcus aureus* Gamma Hemolysin C (Hlg C) recombinant protein.

**Formulation & Storage:** Supplied in PBS and 0.01% sodium azide. **Store at** +4°C for 2-3 weeks, -20°C for long term.

### Notes & Usage Guidelines:

**Clonality/Isotype:** Polyclonal; N/A

**Host:** Rabbit

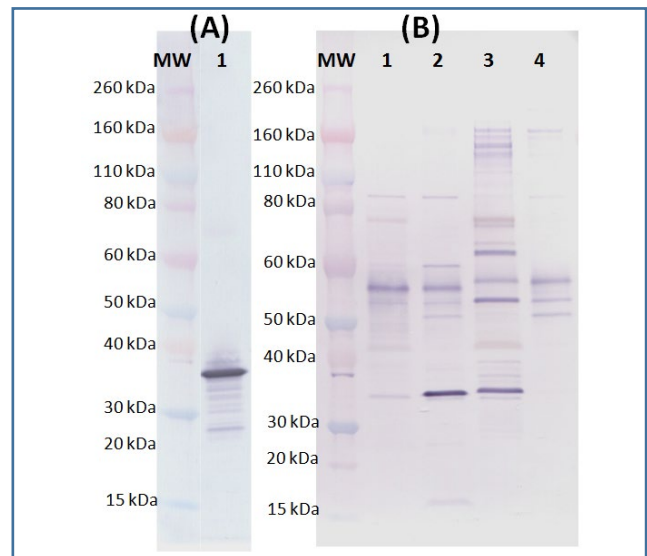
**ELISA:** Assay-dependent dilution; Not Tested

**WB:** Assay-dependent dilution

## Applications

### Western Blot Data:

Western blot was detected with anti-Hlg C polyclonal antibody at 0.5 µg/mL and visualized using an anti-rabbit IgG-AP conjugate and AP substrate. MW denotes Novex Sharp prestained protein markers. (A) 100 ng recombinant rHlg C protein/lane (lane 1). (B) 15 µL of 24-hour culture supernatant/lane. Protein bands with molecular weights <40 kDa were detected in the culture supernatant of USA300 (lane 1), Newman (lane 2) and NCTC 8325-4 (lane 3) but not in the negative control exoprotein null NCTC 8325-4 strain (lane 4).



### Certificate of Testing for:

Lot#: **1212002**

Volume: 500 µg

Concentration: 3.74 mg/mL

### Related Products:

IBT provides a wide array of antibodies, recombinant proteins, and other infectious disease reagents. Please see our website, [www.ibtbioservices.com](http://www.ibtbioservices.com) for more details.

Intended for research use only, not for human, therapeutic, or diagnostic applications.

The buyer cannot sell or otherwise transfer this product for Commercial Purposes without written approval of Integrated BioTherapeutics, LLC.

Copyright 2023. Integrated BioTherapeutics, LLC. All rights reserved.