

Rabbit anti-Staphylococcal LukF-PV pAb

Catalog #: 0312-002

Description:

Rabbit polyclonal antibody reactive to the LukF subunit of Staphylococcal PVL and His tag.

Immunogen/ Target:

Recombinant Pantone-Valentine Leukocidin (PVL) LukF subunit His-tag protein.

Formulation & Storage: Supplied in PBS and 0.01% sodium azide. **Store at** +4°C for 2-3 weeks, -20°C for long term.

Notes & Usage Guidelines:

Clonality/Isotype: Polyclonal; N/A

Host: Rabbit

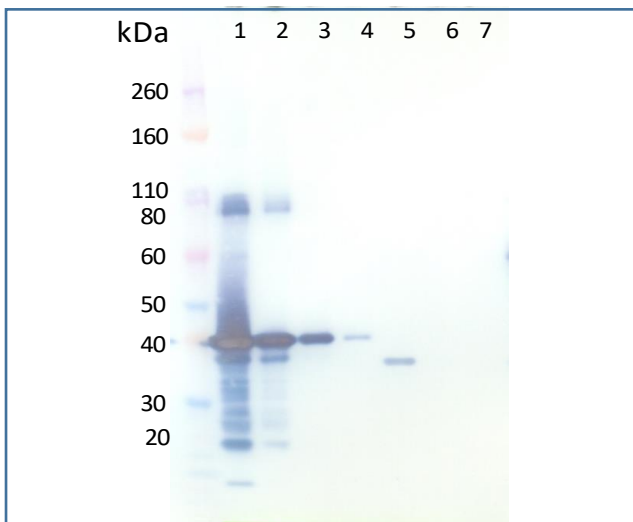
ELISA: Assay-dependent dilution

WB: Assay-dependent dilution

Applications

Western Blot Data:

Western blot was detected with anti-LukF PV polyclonal antibody at 3 µg/mL and visualized using an anti-rabbit HRP conjugate and TMB Membrane substrate. Blot detected as follows: 500 ng rLukF PV (lane 1), 100 ng rLukF PV (lane 2), 10 ng rLukF PV (lane 3), 1 ng rLukF PV (lane 4), 500 ng rLukS PV (lane 5), 100 ng rLukS PV (lane 6), 10 ng rLukS PV (lane 7). rLukF PV-His detects between 35-40 kDa.



ELISA Data:

Internal QC demonstrates good detection of purified rLukF when the antibody is used at 10 µg/mL.

Certificate of analysis:

A hardcopy of datasheet is sent along with the products. Please refer to it for detailed information. For older lots, refer to the applicable certificate of analysis that may be requested at products@ibtbioservices.com.

Related Products:

IBT provides a wide array of antibodies, recombinant proteins, and other infectious disease reagents. Please see our website, www.ibtbioservices.com for more details.

Intended for research use only, not for human, therapeutic, or diagnostic applications.
The buyer cannot sell or otherwise transfer this product for Commercial Purposes without written approval of Integrated BioTherapeutics, LLC.

Copyright 2023. Integrated BioTherapeutics, LLC. All rights reserved.