

## Rabbit anti-EsxA His-6 Polyclonal Antibody

Catalog #: 0311-007

Lot #: 2208006

### Description:

Rabbit polyclonal antibody broadly reactive to EsxA His-6.

**Formulation & Storage:** Supplied in PBS. Store at +4°C for 2-3 weeks, -80°C for long term.

### Immunogen/ Target:

Staphylococcus aureus Ess extracellular protein A (EsxA) His-6 peptide polyclonal (MSPEEIRAKSQSYGC).

### Notes & Usage Guidelines:

**Clonality/Isotype:** Polyclonal; N/A

**Host:** Rabbit

**ELISA:** Assay-dependent dilution

**WB:** Assay-dependent dilution

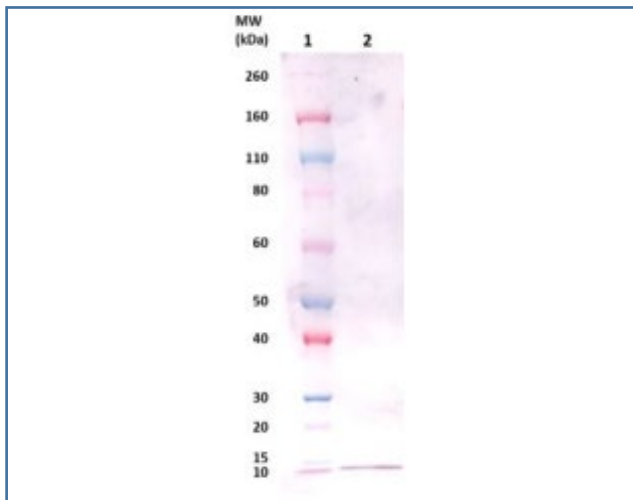
## Applications

### Western Blot Data:

100ng (lane 2) of EsxA His-6 protein (cat # 0541- 006) was loaded and detected with anti-EsxA His-6 polyclonal antibody at 1 µg/mL and visualized using an anti-rabbit AP conjugate and AP substrate (lane 2). Lane 1 denotes Novex® Sharp prestained protein marker.

### ELISA Data:

N/A



### Certificate of Testing for:

Lot#: **2208006**

Volume: 100 µg

Concentration: 1.743 mg/mL

### Related Products:

IBT provides a wide array of antibodies, recombinant proteins, and other infectious disease reagents. Please see our website, [www.ibtbioservices.com](http://www.ibtbioservices.com) for more details.

Intended for research use only, not for human, therapeutic, or diagnostic applications.  
The buyer cannot sell or otherwise transfer this product for Commercial Purposes without written approval of Integrated BioTherapeutics, LLC.

Copyright 2023. Integrated BioTherapeutics, LLC. All rights reserved.