

Rabbit anti-EsxB His6 Polyclonal Antibody

Catalog #: 0311-006

Description:

Rabbit polyclonal antibody broadly reactive to EsxB His6.

Formulation & Storage: Supplied in PBS. Store at +4°C for 2-3 weeks, -80°C for long term.

Immunogen/ Target:

Staphylococcus aureus Ess extracellular protein B (EsxB) His6 peptide polyclonal (GGYKGIKADGGKVDC).

Notes & Usage Guidelines:

Clonality/Isotype: Polyclonal; N/A

Host: Rabbit

ELISA: Assay-dependent dilution

WB: Assay-dependent dilution

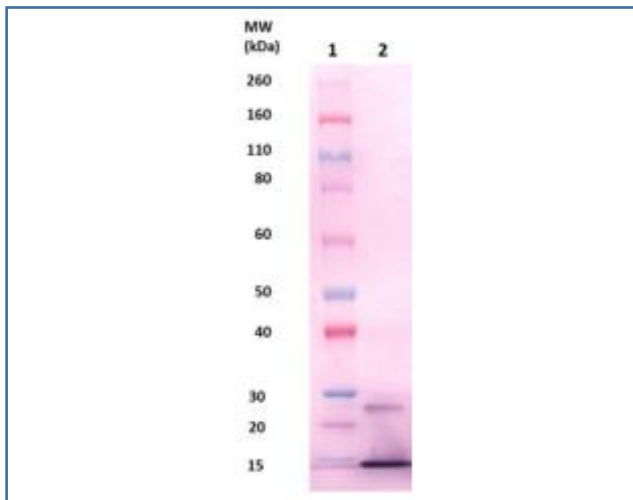
Applications

Western Blot Data:

100ng (lane 2) of EsxB His6 protein (cat # 0541- 005) was loaded and detected with anti-EsxB His6 polyclonal antibody at 1 µg/mL and visualized using an anti-rabbit AP conjugate and AP substrate (lane 2). Lane 1 denotes Novex® Sharp prestained protein marker.

ELISA Data:

Not Tested



Certificate of analysis:

A hardcopy of datasheet is sent along with the products. Please refer to it for detailed information. For older lots, refer to the applicable certificate of analysis that may be requested at products@ibtbioservices.com.

Related Products:

IBT provides a wide array of antibodies, recombinant proteins, and other infectious disease reagents. Please see our website, www.ibtbioservices.com for more details.

Intended for research use only, not for human, therapeutic, or diagnostic applications.
The buyer cannot sell or otherwise transfer this product for Commercial Purposes without written approval of Integrated BioTherapeutics, LLC.

Copyright 2023. Integrated BioTherapeutics, LLC. All rights reserved.