

Rabbit Anti-rClfA 40A (41- 559) His6 Polyclonal Antibody

Catalog #: 0311-004

Lot #: 2208003

Description:

Rabbit polyclonal antibody broadly reactive to rClfA 40A (41-559) His6.

Formulation & Storage: Supplied in PBS. Store at +4°C for 2-3 weeks, -80°C for long term

Immunogen/ Target:

Staphylococcus aureus clumping factor A (rClfA) 40A (41-559) His6 peptide polyclonal (CIDKPVVPEQPDEPG).

Notes & Usage Guidelines:

Clonality/Isotype: Polyclonal; NA

Host: Rabbit

ELISA: Not Tested

WB: Assay-dependent dilution

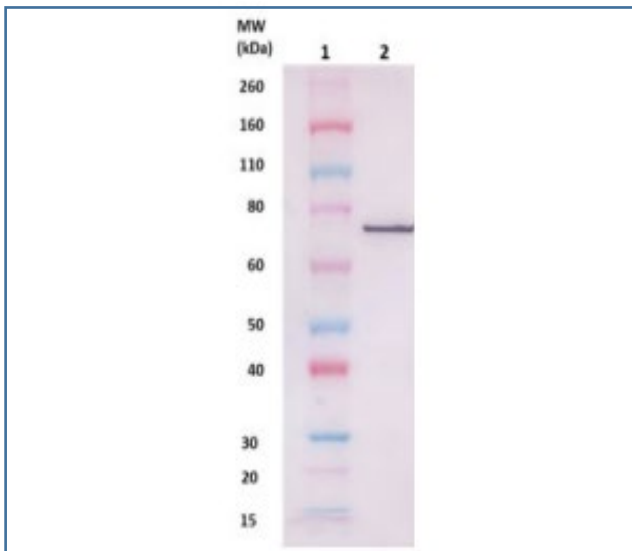
Applications

Western Blot Data:

100ng (lane 2) of rClfA 40A (41-559) His6 protein (cat # 0541-003) was loaded and detected with anti-rClfA 40A (41-559) His6 polyclonal antibody at 1 µg/mL and visualized using an anti-rabbit AP conjugate and AP substrate (lane 2). Lane 1 denotes Novex® Sharp prestained protein marker.

ELISA Data:

Not Tested



Certificate of Testing for:

Lot#: **2208003**

Volume: 100 µg

Concentration: 0.988 mg/mL

Related Products:

IBT provides a wide array of antibodies, recombinant proteins, and other infectious disease reagents. Please see our website, www.ibtbioservices.com for more details.

Intended for research use only, not for human, therapeutic, or diagnostic applications.
The buyer cannot sell or otherwise transfer this product for Commercial Purposes without written approval of Integrated BioTherapeutics, LLC.

Copyright 2023. Integrated BioTherapeutics, LLC. All rights reserved.