

## Rabbit anti-Staphylococcal Superantigens pAb

Catalog #: 0311-001

### Description:

Rabbit polyclonal antibody broadly reactive to SEB, SEA, SEC and TSST-1.

### Immunogen/ Target:

Combination of Staphylococcal Superantigens: Enterotoxin B (SEB), Enterotoxin A (SEA), and Toxic Shock Syndrome Toxin (TSST-1).

**Formulation & Storage:** Supplied in PBS. Store at +4°C for 2-3 weeks, -20°C for long term.

### Notes & Usage Guidelines:

**Clonality/Isotype:** Polyclonal; N/A

**Host:** Rabbit

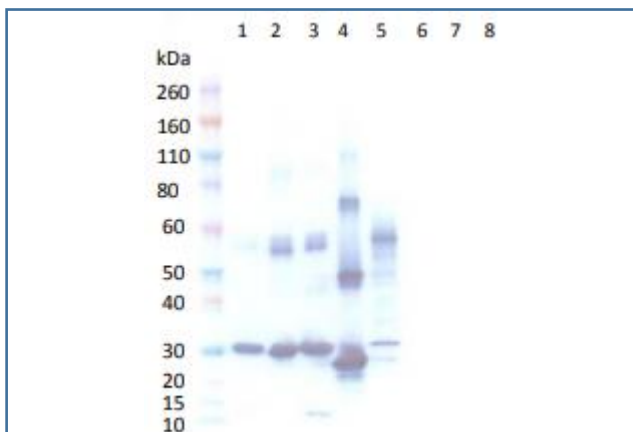
**ELISA:** Assay-dependent dilution

**WB:** Assay-dependent dilution

## Applications

### Western Blot Data:

Western blot was detected with anti-Staphylococcal superantigens polyclonal antibody at 1 µg/mL and visualized using an anti-rabbit HRP conjugate and TMB Membrane substrate. Blot detected as follows: 50 ng SEB (lane 1), 50 ng SEA (lane 2), 50 ng SEC-1 (lane 3), 50 ng TSST-1 (lane 4), 15 µL of a 24 hour culture supernatant of an SEB producing Staphylococcus aureus strain (lane 5), 15µL of the media without culture growth (lane 6), 50 ng LukS-PV (lane 7) and 50 ng LukF-PV (lane 8). Most enterotoxin and TSST-1 toxins detect between 27-30 kDa.



### ELISA Data:

Various Staphylococcal toxins were coated to a plate at a concentration of 1 µg/mL in PBS. Anti-Staphylococcal Superantigen polyclonal antibody was serially diluted semi-log from 2 µg/mL and incubated with the toxin coated plate. Washed plates were detected with anti-rabbit HRP conjugate and TMB substrate. OD650 was reported below.

Ab Concentration (ug/mL)	Avg OD650				
	SEB @ 1 ug/mL	SEA @ 1 ug/mL	TSST-1 @ 1 ug/mL	LukS-PV @ 1 ug/mL	α-Toxin @ 1 ug/mL
2.0000	3.8464	3.7084	3.6972	0.0591	0.0825
0.6329	3.0772	2.0036	2.2382	0.0539	0.0748
0.2003	1.1375	0.8820	0.9244	0.0557	0.0575
0.0634	0.4373	0.3281	0.3261	0.0638	0.0774
0.0201	0.1959	0.1375	0.1508	0.0571	0.0653
0.0063	0.1099	0.1069	0.1097	0.0684	0.0701
0.0020	0.0794	0.0749	0.0766	0.0734	0.0705
0.0000	0.0613	0.0612	0.0630	0.0753	0.0816

### Certificate of analysis:

A hardcopy of datasheet is sent along with the products. Please refer to it for detailed information. For older lots, refer to the applicable certificate of analysis that may be requested at [products@ibtbioservices.com](mailto:products@ibtbioservices.com).

### Related Products:

IBT provides a wide array of antibodies, recombinant proteins, and other infectious disease reagents. Please see our website, [www.ibtbioservices.com](http://www.ibtbioservices.com) for more details.

**Intended for research use only, not for human, therapeutic, or diagnostic applications.**

*The buyer cannot sell or otherwise transfer this product for Commercial Purposes without written approval of Integrated BioTherapeutics, LLC.*

Copyright 2023. Integrated BioTherapeutics, LLC. All rights reserved.