

Rabbit anti-Zika NS1 pAb

Catalog #: 0308-002

Description:

Affinity-purified rabbit polyclonal antibody detects ZIKV virus lysate (strain FSS13025, Asian lineage).

Immunogen/ Target:

Peptide sequence to Zika virus (ZIKV) NS1 (nonstructural protein 1).

Formulation & Storage: Supplied in PBS and 0.02% sodium azide. **Store at** +4°C for 2-3 weeks, -20°C for long term.

Notes & Usage Guidelines:

Clonality/Isotype: Polyclonal; N/A

Host: Rabbit

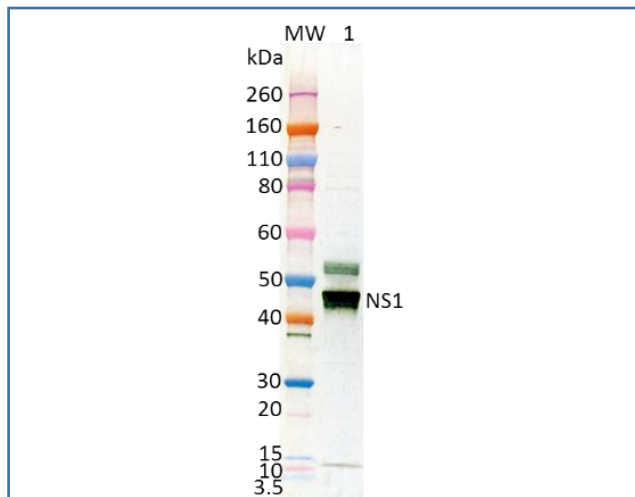
ELISA: Assay-dependent dilution

WB: Assay-dependent dilution

Applications

Western Blot Data:

5 µg of ZIKV sucrose-purified virus lysate (lane 1) tested under denaturing and reducing condition, was detected using the anti-ZIKV NS1 rabbit Pab at 0.5 µg/mL, followed by an anti-rabbit IgG-HRP conjugate and TMB membrane substrate.



ELISA Data:

ZIKV sucrose-purified virus lysate was diluted to 10 µg/mL in PBS for plate coating. Anti-ZIKV NS1 rabbit pAb was serially diluted semi-log from 100 µg/mL and incubated on the coated plates. Washed plate was detected with anti-rabbit IgG-HRP conjugate and TMB substrate. OD650 is reported below.

Anti-ZIKV NS1 Rabbit Pab (µg/mL)	OD 650
100.000	2.922
31.623	1.951
10.000	1.018
3.162	0.444
1.000	0.210
0.316	0.121
0.100	0.086
0.032	0.073
0.010	0.080
0.003	0.069
0.001	0.068

Certificate of analysis:

A hardcopy of datasheet is sent along with the products. Please refer to it for detailed information. For older lots, refer to the applicable certificate of analysis that may be requested at products@ibtbioservices.com.

Related Products:

IBT provides a wide array of antibodies, recombinant proteins, and other infectious disease reagents. Please see our website, www.ibtbioservices.com for more details.

Intended for research use only, not for human, therapeutic, or diagnostic applications.

The buyer cannot sell or otherwise transfer this product for Commercial Purposes without written approval of Integrated BioTherapeutics, LLC.

Copyright 2023. Integrated BioTherapeutics, LLC. All rights reserved.