

Rabbit anti-LASV Z pAb

Catalog #: 0307-002

Description:

Affinity purified rabbit polyclonal antibody reactive to LASV Z in Western blot and ELISA.

Immunogen/ Target:

Peptide sequence to Lassa virus (LASV) Z protein.

Formulation & Storage: Supplied in PBS and 0.02% sodium azide. **Store at** +4°C for 2-3 weeks, -20°C for long term.

Notes & Usage Guidelines:

Clonality/Isotype: Polyclonal; N/A

Host: Rabbit

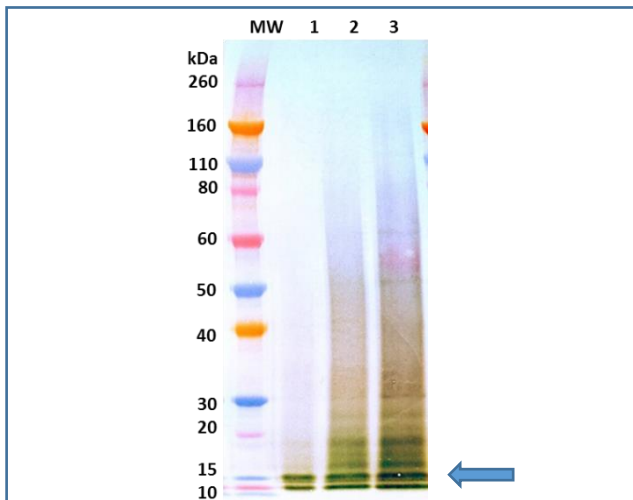
ELISA: Assay-dependent dilution

WB: Assay-dependent dilution

Applications

Western Blot Data:

Western blot was detected under denaturing and reducing conditions with anti-LASV Z antibody at 0.1 µg/mL and visualized using an anti-rabbit IgG-HRP conjugate and TMB Membrane substrate. LASV Z is visualized at 25 ng, 50 ng, and 100 ng (lane 1, 2, and 3 respectively).



ELISA Data:

LASV Z protein was diluted to 10 ng/well in PBS for plate coating. Anti-LASV Z antibody was serially diluted semi-log from 10 µg/mL and incubated on the coated plates. Washed plate was detected with anti-rabbit IgG-HRP conjugate and TMB substrate. OD650 is reported below.

Rb anti-Lassa Z (µg/mL)	OD 650 nm
10.0000	3.743
3.1623	3.832
1.0000	3.812
0.3162	3.752
0.1000	3.594
0.0316	3.134
0.0100	2.086
0.0032	1.018
0.0010	0.438
0.0003	0.214
0.0001	0.138
0.0000	0.095

Certificate of analysis:

A hardcopy of datasheet is sent along with the products. Please refer to it for detailed information. For older lots, refer to the applicable certificate of analysis that may be requested at products@ibtbioservices.com.

Related Products:

IBT provides a wide array of antibodies, recombinant proteins, and other infectious disease reagents. Please see our website, www.ibtbioservices.com for more details.

Intended for research use only, not for human, therapeutic, or diagnostic applications.

The buyer cannot sell or otherwise transfer this product for Commercial Purposes without written approval of Integrated BioTherapeutics, LLC.

Copyright 2023. Integrated BioTherapeutics, LLC. All rights reserved.