

Rabbit anti-MARV GP pAb

Catalog #: 0303-007

Description:

Affinity purified rabbit polyclonal antibody reactive to MARV GP. The antibody detects GP in virus-like particles (VLP) and recombinant GP without the transmembrane region (rGPΔTM) and recombinant GP without the transmembrane region and without the mucin-like domain (rGPΔmuc) in Western blot and ELISA.

Immunogen/ Target:

Peptide sequence to Marburg virus (MARV) glycoprotein (GP); Sequence is specific to the GP2 subunit.

Formulation & Storage: Supplied in PBS and 0.02% Sodium azide. **Store at** +4°C for 2-3 weeks, -80°C for long term.

Notes & Usage Guidelines:

Clonality/Isotype: Polyclonal; N/A

Host: Rabbit

ELISA: Assay-dependent dilution

WB: Assay-dependent dilution

Applications

Western Blot Data:

Western blot was detected with anti-MARV GP polyclonal antibody at 50 ng/mL and visualized using an anti-rabbit IgG-HRP conjugate and TMB Membrane substrate. GP2 is visualized in the MARV rGPΔTM, rGPΔmuc and VLP, as indicated. Note: GP is highly glycosylated and most often detects at a molecular weight higher than the theoretical size due to the altered mobility.

Heat-denatured and reduced antigens:

Lane 1: 0.2 μg MARV-Musoke rGPΔTM (Catalog # 0503-001)

Lane 2: 0.2 μg MARV-Angola rGPΔTM (Catalog # 0506-015)

Lane 3: 0.2 μg RAVV rGPΔmuc (Catalog # 0513-015)

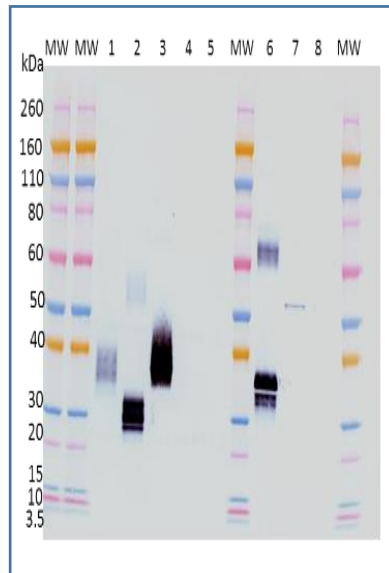
Lane 4: 0.2 μg EBOV rGPΔTM (Catalog # 0501-015)

Lane 5: 0.2 μg SUDV rGPΔTM (Catalog # 0502-015)

Lane 6: 2 μg MARV-Musoke VLP (Catalog # 0566-001)

Lane 7: 2 μg EBOV VLP (Catalog # 0550-001)

Lane 8: 2 μg SUDV VLP (Catalog # 0550-001)



ELISA Data:

VLPs and rGPΔTM proteins were diluted to 10 μg/mL and 1 μg/mL, respectively in PBS for plate coating. Anti-MARV GP polyclonal antibody was serially diluted semi-log from 10 μg/mL and incubated on the coated plates. Washed plates were detected with anti-rabbit IgG-HRP conjugate and TMB substrate. OD650 is reported below.

pAb (μg/mL)	Coating Antigens: VLP @ 10 μg/mL		Coating Antigens: rGPΔTM @ 1 μg/mL	
	MMARV	EBOV	AMARV	EBOV
10.000	3.366	1.725	3.493	0.087
3.162	3.282	0.881	3.491	0.064
1.000	3.047	0.374	3.388	0.056
0.316	2.466	0.162	3.217	0.056
0.100	1.459	0.093	2.580	0.059
0.032	0.685	0.075	1.462	0.059
0.010	0.299	0.064	0.649	0.053
0.003	0.148	0.068	0.251	0.055
0.001	0.084	0.059	0.126	0.058
0.000	0.064	0.074	0.077	0.069
0.000	0.077	0.067	0.066	0.059

Certificate of analysis:

A hardcopy of datasheet is sent along with the products. Please refer to it for detailed information. For older lots, refer to the applicable certificate of analysis that may be requested at products@ibtbioservices.com.

Related Products:

IBT provides a wide array of antibodies, recombinant proteins, and other infectious disease reagents. Please see our website, www.ibtbioservices.com for more details.

Intended for research use only, not for human, therapeutic, or diagnostic applications.

The buyer cannot sell or otherwise transfer this product for Commercial Purposes without written approval of Integrated BioTherapeutics, LLC.

Copyright 2023. Integrated BioTherapeutics, LLC. All rights reserved.