

## Rabbit anti-SUDV soluble GP pAb

Catalog #: 0302-030

### Description:

Affinity purified rabbit polyclonal antibody reactive to SUDV sGP. The antibody detects sGP in Western Blot and ELISA.

### Immunogen/ Target:

Peptide sequence to Sudan Virus (SUDV) soluble glycoprotein (sGP).

**Formulation & Storage:** Supplied in PBS and 0.02% sodium azide. **Store at** +4°C for 2-3 weeks, -20°C for long term.

### Notes & Usage Guidelines:

**Clonality/Isotype:** Polyclonal; N/A

**Host:** Rabbit

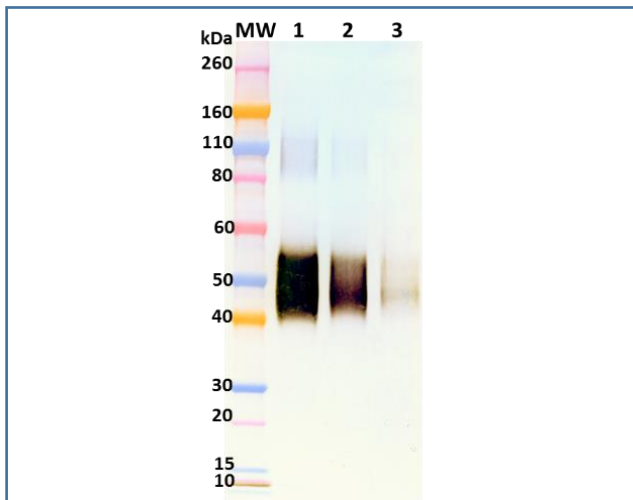
**ELISA:** Assay-dependent dilution

**WB:** Assay-dependent dilution

## Applications

### Western Blot Data:

Western blot was detected under denaturing and reducing conditions with anti-SUDV sGP antibody at 0.1 µg/mL and visualized using an anti-rabbit IgG-HRP conjugate and TMB Membrane substrate. SUDV sGP is visualized at 500 ng, 200 ng, and 50 ng (lane 1, 2, and 3 respectively).



### ELISA Data:

SUDV sGP (Catalog # 0570-001) and SUDV GPΔTM (Catalog # 0502-001) proteins were diluted to 400 ng/well in PBS for plate coating. Anti-SUDV sGP antibody was semi-log diluted from 10 µg/mL and incubated on the coated plates. Washed plate was detected with anti-rabbit IgG-HRP conjugate and TMB substrate. OD650 is reported below.

### Capture ELISA Data:

µg/mL Rabbit anti-SUDV sGP pAb	SUDV	
	soluble GP	GPΔTM
10.0000	3.703	0.119
3.1623	3.673	0.087
1.0000	3.495	0.075
0.3162	2.963	0.072
0.1000	2.140	0.064
0.0316	1.032	0.056
0.0100	0.439	0.068
0.0032	0.192	0.064
0.0010	0.117	0.084
0.0003	0.113	0.076
0.0001	0.065	0.108
0.0000	0.054	0.066
	<b>OD 650</b>	

### Certificate of analysis:

A hardcopy of datasheet is sent along with the products. Please refer to it for detailed information. For older lots, refer to the applicable certificate of analysis that may be requested at [products@ibtbioservices.com](mailto:products@ibtbioservices.com).

### Related Products:

IBT provides a wide array of antibodies, recombinant proteins, and other infectious disease reagents. Please see our website, [www.ibtbioservices.com](http://www.ibtbioservices.com) for more details.

**Intended for research use only, not for human, therapeutic, or diagnostic applications.**

*The buyer cannot sell or otherwise transfer this product for Commercial Purposes without written approval of Integrated BioTherapeutics, LLC.*

**Copyright 2023. Integrated BioTherapeutics, LLC. All rights reserved.**