

Rabbit anti-EBOV VP24

Catalog #: 0301-047

Description:

Affinity purified rabbit polyclonal antibody reactive to EBOV VP24.

Immunogen/ Target:

Peptide sequence specific to Ebola Virus (EBOV) VP24 matrix protein.

Formulation & Storage: Supplied in PBS in frozen format with no preservatives added. **Store at +4°C** for 2-3 weeks; **-80°C** for long-term

Notes & Usage Guidelines:

Clonality/Isotype: Polyclonal; N/A

Host: Rabbit

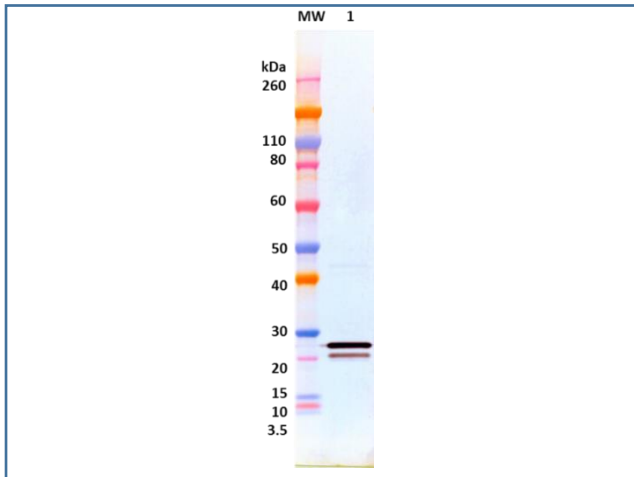
ELISA: Assay-dependent dilution

WB: Assay-dependent dilution

Applications

Western Blot Data:

Anti-EBOV VP24 antibody at 100 ng/mL was able to detect 100 ng of EBOV rVP24 (lane 1) by Western Blot Analysis. Western Blots were developed using an anti-rabbit IgG-HRP conjugate and TMB Membrane substrate.



ELISA Data:

rVP24 protein was diluted to 3 µg/mL in PBS for plate coating. Anti-EBOV VP24 antibody was serially diluted semi-log from 10 µg/mL and incubated on the coated plates. Washed plates were detected with anti-rabbit IgG-HRP conjugate and TMB substrate. OD₆₅₀ is reported below.

Anti-EBOV VP24 Antibody (µg/mL)	EBOV VP24 @ 3 µg/mL
10.0000	3.928
3.1623	3.974
1.0000	3.758
0.3162	3.582
0.1000	2.959
0.0316	1.861
0.0100	0.809
0.0032	0.329
0.0010	0.151
0.0003	0.085
0.0001	0.082
0.0000	0.082
	OD 650nm

Certificate of analysis:

A hardcopy of datasheet is sent along with the products. Please refer to it for detailed information. For older lots, refer to the applicable certificate of analysis that may be requested at products@ibtbioservices.com.

Related Products:

IBT provides a wide array of antibodies, recombinant proteins, and other infectious disease reagents. Please see our website, www.ibtbioservices.com for more details.

Intended for research use only, not for human, therapeutic, or diagnostic applications.

The buyer cannot sell or otherwise transfer this product for Commercial Purposes without written approval of Integrated BioTherapeutics, LLC.

Copyright 2023. Integrated BioTherapeutics, LLC. All rights reserved.