

## Rabbit anti-ZEBOV L-Polymerase

Catalog #: 0301-045

### Description:

Affinity purified rabbit polyclonal antibody reactive to Zaire Ebola virus L-Polymerase. The antibody detects L-Polymerase by Western blot in ZEBOV infected HeLa cells.

### Immunogen/ Target:

Peptide sequence specific to Zaire Ebola virus (ZEBOV) L-Polymerase protein.

**Formulation & Storage:** Supplied in PBS in frozen format with 0.01% Sodium azide added. **Store at +4°C** for 2-3 weeks; **-80°C** for long-term

### Notes & Usage Guidelines:

**Clonality/Isotype:** Polyclonal; N/A

**Host:** Rabbit

**ELISA:** Not tested

**WB:** Assay-dependent dilution

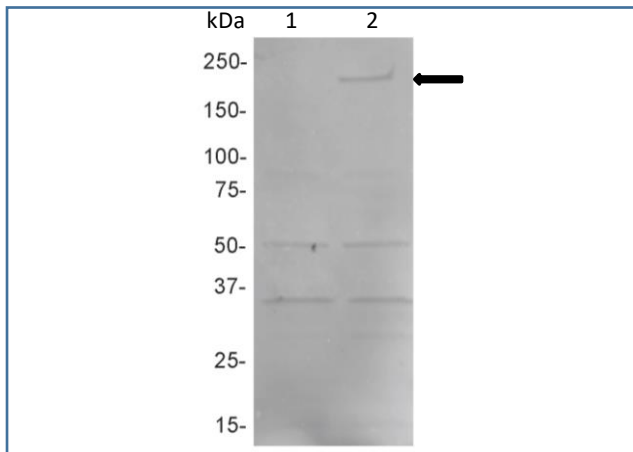
## Applications

### Western Blot Data:

Western blot performed with uninfected HeLa cells (Lane 1) and HeLa cells infected with ZEBOV (Mayinga) ebolavirus (Lane 2). Blots were detected using anti-L Polymerase at 1 µg/mL and visualized using an anti-rabbit HRP conjugate and chromogenic substrate (ZEBOV L polymerase is shown by arrow). Data kindly provided by Dr. Olena Shtanko in the lab of Dr. Robert Davey at the Texas Biomedical Research Institute.

### ELISA Data:

Not tested.



### Certificate of analysis:

A hardcopy of datasheet is sent along with the products. Please refer to it for detailed information. For older lots, refer to the applicable certificate of analysis that may be requested at [products@ibtbioservices.com](mailto:products@ibtbioservices.com).

### Related Products:

IBT provides a wide array of antibodies, recombinant proteins, and other infectious disease reagents. Please see our website, [www.ibtbioservices.com](http://www.ibtbioservices.com) for more details.

**Intended for research use only, not for human, therapeutic, or diagnostic applications.**  
*The buyer cannot sell or otherwise transfer this product for Commercial Purposes without written approval of Integrated BioTherapeutics, LLC.*

Copyright 2023. Integrated BioTherapeutics, LLC. All rights reserved.