

# Anti-Staphylococcal Enterotoxin B (SEB) IgG132AM mAb

Catalog #: 0220-015

Lot #: 2304004

**Description:**

Human monoclonal antibody reactive to Staphylococcus aureus enterotoxin B.

**Formulation & Storage:** Supplied in PBS. Store at +4°C for 2-3 weeks, ≤-20°C for long term.

**Immunogen/ Target:**

Staphylococcal enterotoxin B (SEB)

**Notes & Usage Guidelines:**

**Clonality/Isotype:** Monoclonal; IgG<sub>1</sub>

**Host:** Human

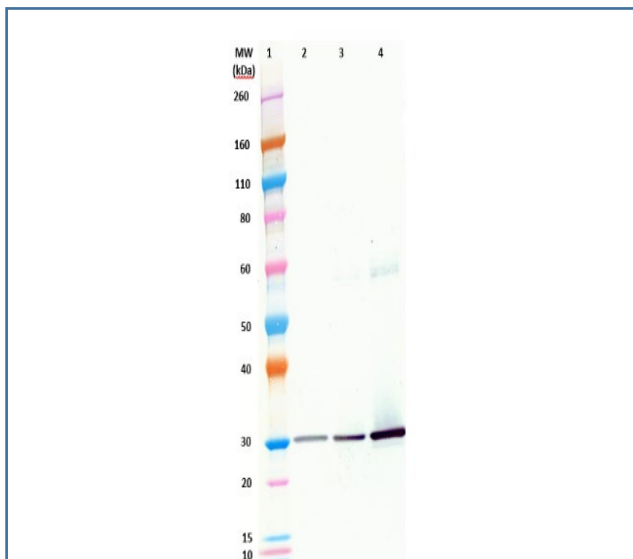
**ELISA:** Assay-dependent dilution

**WB:** Assay-dependent dilution

## Applications

**Western Blot Data:**

SEB at 50 ng, 100 ng, and 500 ng, (lanes 3-5). SEB was detected with monoclonal antibody anti-SEB IgG132AM at 0.1 µg/mL and an anti-Human IgG-HRP conjugate.



**ELISA Data:**

SEB was coated to the plate overnight at 2-8°C at a concentration of 1 µg/mL. Anti-SEB IgG132AM was serially diluted semi-log (1:3.16 serial dilutions) from 10,000 ng/mL and incubated on the SEB coated plate. Captured SEB was detected using a Goat Anti-Human IgG-HRP conjugate.

**Capture ELISA Data:**

ng/mL	OD 650 nm
	IgG 132AM Ab
10,000.00	3.813
3,162.255	3.748
999.986	3.700
316.221	3.713
99.997	3.557
31.622	3.356
10.000	2.591
3.162	1.468
1.000	0.626
0.316	0.246
0.100	0.108
0.032	0.063

**Certificate of Testing for:**

Lot#: **2304004**

Volume: 100 µg

Concentration: 1.561 mg/mL

**Related Products:**

IBT provides a wide array of antibodies, recombinant proteins, and other infectious disease reagents. Please see our website, [www.ibtbioservices.com](http://www.ibtbioservices.com) for more details.

Intended for research use only, not for human, therapeutic, or diagnostic applications.  
 The buyer cannot sell or otherwise transfer this product for Commercial Purposes without written approval of Integrated BioTherapeutics, LLC.

Copyright 2023. Integrated BioTherapeutics, LLC. All rights reserved.