

# Anti-Staphylococcal Enterotoxin B (SEB) IgG121 mAb

Catalog #: 0220-014

Lot #: 2304003

**Description:**

Human monoclonal antibody reactive to *Staphylococcus aureus* enterotoxin B.

**Immunogen/ Target:**

Staphylococcal enterotoxin B (SEB)

**Formulation & Storage:** Supplied in PBS. Store at +4°C for 2-3 weeks, ≤-20°C for long term.

**Notes & Usage Guidelines:**

**Clonality/Isotype:** Monoclonal; IgG<sub>1</sub>

**Host:** Human

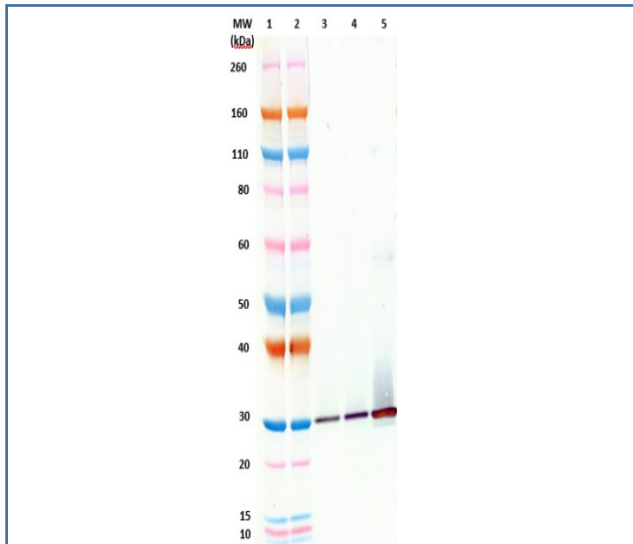
**ELISA:** Assay-dependent dilution

**WB:** Assay-dependent dilution

## Applications

**Western Blot Data:**

SEB at 50 ng, 100 ng, and 500 ng, (lanes 3-5). SEB was detected with monoclonal antibody anti-SEB IgG121 at 0.1 µg/mL and an anti-Human IgG-HRP conjugate.



**ELISA Data:**

SEB was coated to the plate overnight at 2-8°C at a concentration of 1 µg/mL. Anti-SEB IgG121 was serially diluted semi-log (1:3.16 serial dilutions) from 10,000 ng/mL and incubated on the coated plate. Goat Anti-Human IgG-HRP conjugate was used as a detection reagent.

**Capture ELISA Data:**

ng/mL	OD 650 nm
	IgG 121 Ab
10,000.00	3.829
3,162.255	3.739
999.986	3.679
316.221	3.645
99.997	3.593
31.622	3.191
10.000	2.235
3.162	0.957
1.000	0.350
0.316	0.148
0.100	0.092
0.032	0.061

**Certificate of Testing for:**

Lot#: **2304003**

Volume: 100 µg

Concentration: 1.457 mg/mL

**Related Products:**

IBT provides a wide array of antibodies, recombinant proteins, and other infectious disease reagents. Please see our website, [www.ibtbioservices.com](http://www.ibtbioservices.com) for more details.

Intended for research use only, not for human, therapeutic, or diagnostic applications.

The buyer cannot sell or otherwise transfer this product for Commercial Purposes without written approval of Integrated BioTherapeutics, LLC.

Copyright 2023. Integrated BioTherapeutics, LLC. All rights reserved.