

Mouse anti-Staphylococcal Enterotoxin B mAb (2C1)

Catalog #: 0220-013

Description:

Mouse monoclonal antibody reactive to *Staphylococcus aureus* enterotoxin B.

Immunogen/ Target:

Staphylococcal enterotoxin B (SEB)

Formulation & Storage: Supplied in PBS in frozen format with no preservatives added. **Store at** +4°C for 2-3 weeks; -80°C for long-term

Notes & Usage Guidelines:

Clonality/Isotype: Monoclonal; IgG1

Host: Mouse

ELISA: Not recommended

WB: Assay-dependent dilution

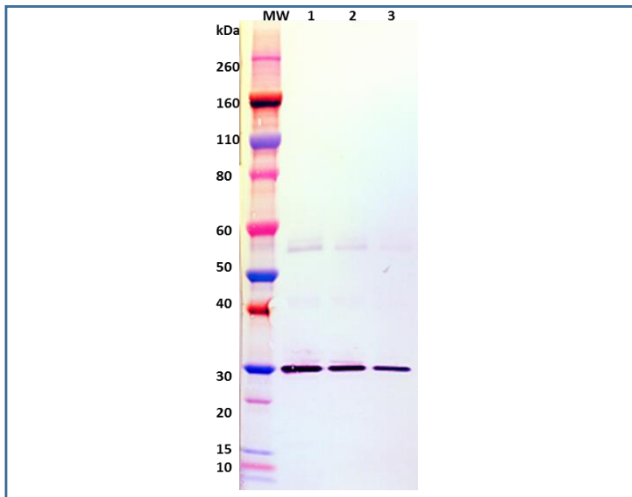
Applications

Western Blot Data:

Western blot detection of SEB at 100 ng, 50 ng and 25 ng (lanes 1-3). SEB was detected with monoclonal antibody 2C1 at 1 µg/mL and an anti-mouse IgG-HRP conjugate.

ELISA Data:

Not recommended as a capture reagent



Certificate of analysis:

A hardcopy of datasheet is sent along with the products. Please refer to it for detailed information. For older lots, refer to the applicable certificate of analysis that may be requested at products@ibtbioservices.com.

Related Products:

IBT provides a wide array of antibodies, recombinant proteins, and other infectious disease reagents. Please see our website, www.ibtbioservices.com for more details.

Intended for research use only, not for human, therapeutic, or diagnostic applications.
The buyer cannot sell or otherwise transfer this product for Commercial Purposes without written approval of Integrated BioTherapeutics, LLC.

Copyright 2023. Integrated BioTherapeutics, LLC. All rights reserved.