

## anti-MARV GP chimeric monoclonal antibody (human IgG1)

Catalog #: 0201-016

### Description:

Protein G purified mouse monoclonal antibody reactive to EBOV VP40. The antibody detects VP40 in virus-like particles (VLP) and recombinant protein.

### Immunogen/ Target:

Purified recombinant Ebola virus VP40 (EBOV rVP40) produced in *E. coli*.

**Formulation & Storage:** Supplied in PBS in frozen format with no preservatives added. **Store at +4°C** for 2-3 weeks; **-80°C** for long-term

### Notes & Usage Guidelines:

**Clonality/Isotype:** Monoclonal; IgG1

**Host:** Mouse

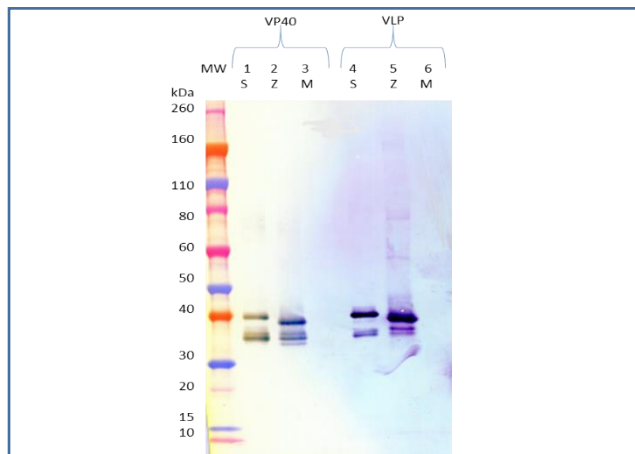
**ELISA:** Assay-dependent dilution

**WB:** Assay-dependent dilution

## Applications

### Western Blot Data:

Western blots were detected under reduced conditions with anti-EBOV VP40 mAb 3G5 at 10 ng/mL and visualized using an anti-mouse IgG-HRP conjugate and TMB membrane substrate. rVP40 was loaded at 100 ng per lane. SUDV rVP40 and EBOV rVP40 are visualized in lanes 1 and 2, respectively. VLP was loaded at 1 µg per lane. VP40 is detected in SUDV VLP (lane 4) and EBOV VLP (lane 5).



### ELISA Data:

rVP40 proteins and VLPs were diluted to 1 and 10 µg/mL, respectively in PBS for plate coating. Anti-EBOV VP40 antibody 3G5 was serially diluted semi-log dilutions from 10 µg/mL and incubated on the coated plates. Washed plates were detected with anti-mouse IgG-HRP conjugate and TMB substrate. OD<sub>650</sub> is reported below.

3G5 µg/mL	rVP40 (1 µg/mL)			VLP (10 µg/mL)		
	EBOV	SUDV	MMARV	EBOV	SUDV	MMARV
10.0000	3.801	3.639	0.079	3.609	2.972	0.069
3.1623	3.677	3.635	0.066	3.522	2.949	0.063
1.0000	3.690	3.498	0.056	3.493	2.758	0.056
0.3162	3.585	3.496	0.052	3.233	2.378	0.083
0.1000	3.302	3.185	0.051	2.851	1.572	0.061
0.0316	2.766	2.622	0.049	2.073	0.767	0.056
0.0100	1.836	1.639	0.062	1.133	0.327	0.053
0.0032	0.901	0.791	0.053	0.501	0.144	0.051
0.0010	0.359	0.312	0.051	0.206	0.079	0.066
0.0003	0.158	0.142	0.051	0.104	0.060	0.044
0.0001	0.148	0.089	0.056	0.067	0.057	0.058

### Certificate of analysis:

A hardcopy of datasheet is sent along with the products. Please refer to it for detailed information. For older lots, refer to the applicable certificate of analysis that may be requested at [products@ibtbioservices.com](mailto:products@ibtbioservices.com).

### Related Products:

IBT provides a wide array of antibodies, recombinant proteins, and other infectious disease reagents. Please see our website, [www.ibtbioservices.com](http://www.ibtbioservices.com) for more details.

**Intended for research use only, not for human, therapeutic, or diagnostic applications.**  
The buyer cannot sell or otherwise transfer this product for Commercial Purposes without written approval of Integrated BioTherapeutics, LLC.

Copyright 2023. Integrated BioTherapeutics, LLC. All rights reserved.