

Pan-filovirus anti-Glycoprotein Chimeric Monoclonal Antibody (c21D10)

Catalog #: 0200-003

Description:

Purified monoclonal antibody reactive to Ebola virus (EBOV), Sudan virus (SUDV), and Marburg virus (MARV) glycoproteins. The antibody detects glycoprotein in virus-like particles (VLP) and recombinant glycoprotein without the transmembrane region (rGPΔTM).

Immunogen/ Target:

Purified recombinant filovirus glycoproteins, modified.

Formulation & Storage: Supplied in PBS in frozen format with no preservatives added. **Store at +4°C** for 2-3 weeks; **-80°C** for long-term

Notes & Usage Guidelines:

Clonality/Isotype: Monoclonal; IgG1

Host: Murine

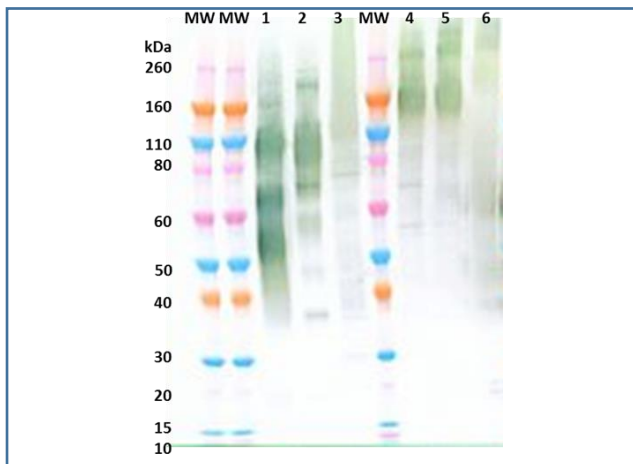
ELISA: Assay-dependent dilution

WB: Assay-dependent dilution

Applications

Western Blot Data:

In Western Blot, glycoproteins were detected under reducing and denaturing conditions using Pan-filovirus anti-glycoprotein c21D10 at 0.5 µg/mL and visualized using an anti-human IgG-HRP conjugate and TMB Membrane substrate. rGPΔTM expressed in SF9 insect cells are visualized in lanes 1-3: EBOV (lane 1), SUDV (lane 2) and MARV (Angola) (lane 3). rGPΔTM expressed in HEK-293T cells are visualized in lanes 4-6: EBOV (lane 4), SUDV (lane 5) and MARV (Musoke) (lane 6). 200 ng/lane of EBOV or SUDV rGPΔTM and 500 ng/lane of MARV rGPΔTM were loaded per lane.



ELISA Data:

GPΔTM proteins and VLP were diluted to 1 µg/mL and 10 µg/mL, respectively, in PBS for plate coating. Pan-filovirus anti-glycoprotein c21D10 was serially diluted semi-log from 100 µg/mL and incubated on the coated plates. Washed plates were detected with anti-human IgG-HRP conjugate and TMB substrate. OD₆₅₀ is reported below.

c21D10 (µg/mL)	rGPΔTM expressed in SF9 insect cells			Virus-like particles		
	EBOV	SUDV	MARV	EBOV	SUDV	MARV
100.000	3.521	3.768	3.508	2.250	2.795	2.907
31.623	3.957	3.819	3.762	2.194	2.871	2.867
10.000	3.831	3.809	3.732	1.851	2.679	2.501
3.162	3.769	3.686	3.442	1.545	2.295	1.898
1.000	3.626	3.536	2.952	1.132	1.807	1.126
0.316	3.104	3.157	2.244	0.644	1.068	0.526
0.100	2.096	2.103	1.212	0.323	0.534	0.228
0.031	0.943	1.034	0.512	0.169	0.245	0.130
0.010	0.402	0.406	0.242	0.110	0.131	0.089
0.003	0.162	0.178	0.130	0.080	0.097	0.082
0.001	0.094	0.114	0.098	0.073	0.080	0.070
0.000	0.086	0.088	0.103	0.062	0.076	0.074

Certificate of analysis:

A hardcopy of datasheet is sent along with the products. Please refer to it for detailed information. For older lots, refer to the applicable certificate of analysis that may be requested at products@ibtbioservices.com.

Related Products:

IBT provides a wide array of antibodies, recombinant proteins, and other infectious disease reagents. Please see our website, www.ibtbioservices.com for more details.

Intended for research use only, not for human, therapeutic, or diagnostic applications.

The buyer cannot sell or otherwise transfer this product for Commercial Purposes without written approval of Integrated BioTherapeutics, LLC.

Copyright 2023. Integrated BioTherapeutics, LLC. All rights reserved.