



**IBT BIOSERVICES**

4 Research Court, Suite 300  
Rockville, MD 20850  
877-411-2041  
Services@ibtbioservices.com

## Recombinant Ebolavirus Glycoprotein minus the Transmembrane Region (EBOV rGPΔTM)

Catalog #: **0501-001**

Lot #: **1808001**

**Description:** Mature, recombinant, HA-tagged ebolavirus glycoprotein minus the transmembrane domain (EBOV rGPΔTM) is supplied as purified protein. EBOV rGPΔTM is produced in mammalian cells and is purified by FPLC.

**Storage:** 2-3 weeks at -20°C, -80°C long term

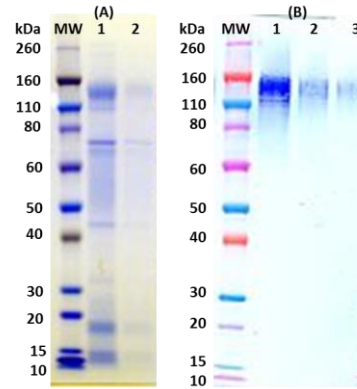
**Size:** **100 µg** of protein is supplied in PBS at a concentration of **0.876 mg/mL**. The theoretical molecular weight of the protein is ~70.5 kDa including the HA-tag, without glycosylation. Because of the highly glycosylated nature of this protein, migration in an SDS-PAGE gel is slowed resulting in broad, diffuse bands representing differing glycosylation forms.

**Relevance:** Recombinant glycoprotein provides a means for antibody development, control protein for testing, and a tool to enhance research.

**Western Blot:** Quality control testing demonstrates strong detection of GP null under reduced conditions down to 50 ng when using IBT's monoclonal antibody 4F3 (cat# 0201-020) at 0.5 µg/mL.

**Related Products:** IBT provides a wide array of anti-filovirus specific antibodies and other infectious disease reagents. Please see our website, [www.ibtbioservices.com](http://www.ibtbioservices.com) for more details.

### SDS-PAGE & Western Blot Detection



(A) SDS-PAGE and stain demonstrating 5 µg, 1 µg (lane 1, 2 respectively) of EBOV rGPΔTM HA-Tag protein under denaturing and reducing conditions. MW denotes Novex Sharp prestained protein markers. (B) Western blot detection of EBOV rGPΔTM at 500 ng, 100 ng, and 50 ng (lanes 1-3). EBOV rGPΔTM was detected using IBT's monoclonal antibody 4F3 (cat# 0201-020) at 0.5 µg/mL and anti-mouse IgG-HRP conjugate, followed by TMB substrate.

### ELISA Data

EBOV GPΔTM ng/well	OD 650 nm
800.00	3.223
400.00	3.313
200.00	3.231
100.00	3.188
50.00	3.238
25.00	2.890
12.50	2.259
6.25	1.600
3.13	0.879
1.56	0.497
0.78	0.244
0.39	0.156

Plate was coated with EBOV rGPΔTM starting at 800 ng/well, serially diluted in DPBS. Washed plate was detected using one dilution of a positive control serum, followed with anti-IgG HRP conjugate and TMB substrate. OD<sub>650</sub> is reported.

**Intended for research use only, not for human, therapeutic, or diagnostic applications.**

*The buyer cannot sell or otherwise transfer this product for Commercial Purposes without written approval of Integrated BioTherapeutics, Inc.*

**Copyright 2018. Integrated BioTherapeutics, Inc. All rights reserved.**